

Purton Magazine



*Purton Walking Group on a January outing
Photo: Helen Dixon & Marion Andrews*

February 2014

50p

PURTON CONTACTS



Wiltshire Councillor	Jacqui Lay	770704
Doctors	Purton Surgery	770207
Dental Surgeries	Church Street	770532
	Philip Cooke	771022
Junior Church	Mary Hodges	770505
Library	Librarians	770870
<i>(Mondays 2 - 5pm; Tuesdays 2 - 7pm; Wednesdays 10am - 5pm; Fridays 2 - 5pm)</i>		
Museum	Curator: Jan Walker	770124
<i>(Reopening 22 Feb, 10am - 4pm, otherwise open Weds 2 - 5pm; Sats 10am - 1pm)</i>		
Police / Fire / Ambulance	Emergency number	999
Police	Non-emergency Number	101
Post Office	c/o Best One	771718
Purton Age Concern	Tony Price	770696
Minibus	Maurice Card	770338
Purton Helping Hand	Pauline Ward	770251
Purton Parish Council	Shirley Bevington	771066
Veterinary Surgery	Purton Veterinary Group	771869
Wiltshire Good Neighbours	Ellen Blacker	07557 110414

Schools and Play Groups:

Bradon Forest Comprehensive	Secretary	770570
Playclose Playgroup	Dawn Phillips	778141 or 07759 583566
Purton Under 5's Community Playgroup	Fionna Griffiths	771723
St Mary's Primary	Secretary	770239

CHURCH OF ENGLAND – PARISH CHURCH OF ST MARY

<i>Vicar:</i>	<i>Revd Ian Tweedie-Smith (Priest-in-charge), tel 770077 (for emergencies only, 773031) email: vicarage@stmaryspurton.org.uk</i>	
<i>Curate:</i>	<i>Revd Judith Wells, tel 770627, email curate@stmaryspurton.org.uk</i>	
<i>Wardens:</i>	<i>David Nettleton, tel 772298 Sandra Horsnall, tel 770157</i>	
<i>Administrator:</i>	<i>Rosie Harris, tel 773035, email administrator@stmaryspurton.org.uk</i>	
<i>Web site:</i>	<i>www.stmaryspurton.org.uk</i>	
<i>Services:</i>	<i>See Diary Page in this magazine</i>	

METHODIST CHURCHES

<i>Minister</i>	<i>Rev David Perkins tel 853197 1 Garraways, Woodshaw, Royal Wootton Bassett SN4 8LT</i>	
<i>Services:</i>	<i>PURTON See Diary Page in this magazine BRAYDON Sundays 6.00 pm Evening Worship</i>	

CATHOLIC CHURCH

CHURCH OF THE SACRED HEART, ROYAL WOOTTON BASSETT		
<i>Parish Deacon</i>	<i>Reverend Terry Aspell tel 325681 Church of the Sacred Heart, High Street, Royal Wootton Bassett</i>	
<i>Services:</i>	<i>Holy Days 7.30 pm Sundays 11.00 am Mass For times of weekday services please see Church notice board</i>	

ST MARY'S CHURCH, CRICKLADE

<i>Priest</i>	<i>Father Philip Beisly tel 01285 712586 St Mary's Church, High Street, Cricklade</i>	
<i>Holy Days</i>	<i>7.00 pm Mass</i>	<i>Sundays 9.30 am Mass</i>

From The Editors

February marks a turn in the year. Following the shortest day of 21 December with only 7 hours and 48 minutes between sunrise and sunset, February starts with just over 9 hours and ends with almost 11 hours and many in the village will be able to get up in daylight and return home from work in daylight too!

Hopefully, after the high winds and constant rain of early January we will be able to see some signs of spring not too far off – bulbs sprouting, catkins on the hazel trees and better weather for getting out and about. Our cover picture shows the intrepid band of the Purton Walking Group on one of their recent forays. Sheila Fowler is the group contact if you would like to join them – tel 01793 770970.

The Beavers are also out and about – this youngest section of the Scouts is starting up again in Purton in February as we read on page 51. Meanwhile the Brownies are celebrating 100 years!

Also celebrating a major anniversary is Purton & District Age Concern who are holding a concert at the Village Hall to mark their 50 years.

Was it really as long ago as 10 years that the *Beagle 2* rover was lost on Mars ... and that the St Mary's *Last Supper* painting was being restored in Bristol having been found in Florida? Page 31 tells us that it was!

The Feast of St Valentine on 14 February was first decreed in 496 by Pope Gelasius I who included Valentine among those "... whose names are justly revered among men, but whose acts are known only to God", implying that absolutely nothing is known about the life of St Valentine. Many of the current legends about Saint Valentine were invented in the fourteenth century in England, notably by Geoffrey Chaucer and the feast day became associated with romantic love. He should also be the patron saint of greetings card manufacturers!

An old adage for young ladies goes that if you see a robin flying overhead on Valentine's Day, you will marry a sailor. If you see a sparrow, you will marry a poor man and be very happy. If you see a goldfinch, you will marry a millionaire. There are so many goldfinches on Purton's bird feeders most days that some young lady might be lucky!

If all's fair in love and war, you might like to see what the Gardeners' Guild is up to. Their subject for the February meeting is 'War in the Vegetable Garden - dealing with Pests and Diseases'. More details on page 55.

50th

anniversary of Purton
Age Concern to be
celebrated with a concert
– see page 10

100th

anniversary of the
Brownies to be
celebrated worldwide
– see page 51

£1,217

raised for
Philippines Disaster
Relief
– see page 30

CONTENTS

[10 Years On](#)
[Age Concern](#)
[Back to Church Sunday](#)
[Beavers are Back!](#)
[Big Promise](#)
[Bowls Club](#)
[Bradon Forest School News](#)
[Breast Cancer Care](#)
[Christingle](#)
[Church Floodlighting](#)
[Coffee & Chat](#)
[Cricket Club](#)
[Cricklade Band](#)
[Cricklade Country Market](#)
[Darts League](#)
[Diary Pages](#)
[Elizabeth Ward MBE](#)
[Evening WI](#)
[Fish & Chip Supper](#)
[Gardeners' Guild](#)
[George Allsopp](#)
[Great War Project](#)
[Group 4 Patients](#)
[Guide Dogs](#)
[Historical Society](#)
[Jump for Justice](#)
[Library Hours](#)

[Obituary Contacts](#)
[On the Lighter Side](#)
[PADS](#)
[Parish Council News](#)
[Philippines Disaster Evening](#)
[Prayer for Purton](#)
[Purton Museum](#)
[Purton Placard](#)
[Purton Postbag - Letters](#)
[Purton Profferings](#)
[Rainbows, Brownies & Guides](#)
[Robert Miles](#)
[Sing for Four](#)
[Spanish & French Books](#)
[Spring Course](#)
[Strictly Come Singing](#)
[Stuart Bond](#)
[Swindon Choral Society](#)
[Swindon Foggy's](#)
[Tennis Club](#)
[Transforming Purton](#)
[Volunteering in Wiltshire](#)
[We Record](#)
[Wiltshire Good Neighbours](#)
[WW1 Centenary](#)
[Your magazine Delivered Free!](#)

The logo for Purton Magazine, featuring the word 'Purton' in a large, stylized serif font with 'Magazine' written in a smaller, simpler font underneath it.

© 2004 - 2014

Magazine Committee

Avril Ainscough, Barbara Compton, John Creasey, Helen Dixon,
Rick Dixon, Sheila Fowler, Nigel Manfield, Francis Sheppard

Typeset & Printed by: **In Touch Services**

Advertising enquiries and copy for contributions

by 10th of each month, please

to: Purton Magazine, c/o In Touch Services, 115 Pavenhill, Purton SN5 4DB
tel & fax: 01793 772954 email: mail@purtonmagazine.co.uk

Distribution enquiries only:

[John Creasey](#)

Other enquiries and comments for the committee to:
The Secretary, 45 Ringsbury Close, Purton SN5 4DF

Also on line at www.purtonmagazine.co.uk

Parish Council News



Flooding

Certain areas within Purton/Purton Stoke and Braydon have experienced flooding problems once again to which regrettably the Parish Council's remit regarding such problems is limited however it will do what it can to assist those within the community. As with Wiltshire Council's policy the Parish Council has no specific remit to supply property owners with the means to protect their property/land against flooding. Wiltshire Council does however have certain exceptions to the rule regarding the supply of sandbags in relation to safeguarding those who are seen to be vulnerable. If so, a decision can be made by Wiltshire Council staff following discussion with the individual or Parish/Town Council regards the supply of such items as sandbags.

If you perceive that you are in imminent danger of flooding then you should contact Wiltshire Council for advice on:-

Landline 0800 23 23 23 Mobile/outside Wiltshire 01225 717234 or out of hours 01722 413834

Flooding problems can also be reported via the Wiltshire Council website:-

email - Clarence@wiltshire.gov.uk or emergencyplanning@wiltshire.gov.uk
(tel. 01225 713159)

Flooding from Rivers

Contact the Environment Agency - tel. 0845 988 1188;

Web site/email - www.environment-agency.gov.uk

The agency also provides a 24-hour 'Floodline' advice/information service.

You can also report incidents to the Parish Council and they will do what they can on your behalf.

If you report incidents directly to Wiltshire Council then please also inform the Parish Council in order that they can compile a record of how often issues occur at specific areas for future consultation with Wiltshire Council.

Parish Council action in relation to flooding

Although the Parish Council is limited in what it can do with regard to safeguarding property it is in the process of consultation with Wiltshire Council with regard to flooding on the highway especially that at Church End and Manor Hill.

It will also be writing to a number of landowners within the community area in relation to maintenance of ditches/watercourses requesting that they keep them clear to allow for a free flow of water through them. Refusal of such action may ultimately lead to legal action being taken by Wiltshire Council.

Footpath - Church End junction to the Pear Tree Hotel

A proposal has been made to Wiltshire Council's local Area Board/CATG group for the construction of a footpath along the side of the road to link the Pear Tree Hotel with Church End/Church Path. Such a pathway will not only assist those who work and patronise the Pear Tree Hotel but those who regularly walk FP81, FP88 via Church Path.

Your views on this proposal are requested in relation to any potential decision

made by Area Board/CATG members regarding funding for this project and can either be sent in writing to the Parish Council office or via email to admin@purtonpc.eclipse.co.uk.

Play Close Play Area

As a result of some of the developments that have taken place in the village, some money has become available through what is known as S106. This means that developers have to contribute agreed funds towards Open Spaces. Funds would be allocated to a certain area or project at an early stage in the planning process; this is then set into a legal agreement that the money must go to that project. Developers also contribute to other things through such agreements but the Parish Council is particularly involved with the Open Spaces element.

We have now accumulated a good sum of money for the Play Close Play Area and have had approval from Wiltshire Council for our proposals. We are therefore pleased to report that work will start in the next few weeks to upgrade and renew the equipment at Play Close. So watch this space and the progress of this exciting project.

We also have some grand plans for the Village Centre Play Area as and when the money becomes available. At the moment we have access to some money so this project will develop over time, but again it will be an exciting development resulting in improved play areas for different age groups to enjoy.

Parish Plan

The Parish Plan is now complete and copies are available to view in the Library and Parish Council Office, and on the Parish Council web site. Some have been printed in a handy A5-size booklet.

There were several points in the Plan which the Parish Council will look at to see if they are achievable/realistic. Some will not be and others will be long term projects depending on money and land/property availability.

Some of the items included in the wish list that emerged from the plan have already been put into action by the Parish Council such as the additional planters that have been placed around the village. Over the next few months we will be feeding the wish list to our respective Committees and Council and will keep you informed of our progress.

Wreaths and additional decorations for Christmas

We are pleased to have received some good feedback from local residents who have appreciated the efforts of our Groundstaff Paul and David in brightening up the village over the Christmas period with the wreaths they made from hedge cuttings and the garland around the wrought iron entrance to the Institute. They are very imaginative when it comes recycling materials. We extend our thanks to them for their initiative and effort.

The lights and Christmas tree at the Institute appear year on year and we would like to thank all of those concerned with this. We often take things for granted and assume it will continue to happen year after year but without some organisation behind the scenes this would not be the case so thank you to all who brighten up our village for us all to enjoy.

The following planning applications have been approved by Wiltshire Council:

N13/05152/FUL *56 Pavenhill*, erection of a garage.

N13/00698/REM *Ridgeway Farm*, Provision of a 1 Form Entry Primary School including erection of school building with associated access, car parking and external works including playing fields, landscaping and associated site development.

N13/05419/FUL *White Lodge Farm, Braydon*, erection of agricultural building.

N13/05803/FUL *5 Palomino Place, Moulden View*, erection of a conservatory.

N13/06152/TCA, N13/06406/TCA

Longcroft, 6 Station Road, fell 1 conifer tree, crown lift 3 apple trees to 2 metres, fell 1 ash tree and 1 conifer tree, height reduction by 2 metres to 3 conifer trees and crown lift to 4 metres and height reduction of 2 metres to row of 4 conifers.

How to contact the Parish Council:

Telephone number 01793 771066 Fax 772646

email: clerk@purtonpc.eclipse.co.uk website www.purtonparishcouncil.gov.uk

The Parish Council's letter box is on the wall adjacent to the side door (entrance door to the Parish Council offices) to the rear of the Library/Institute.

On our new web site you can join up to receive regular updates and newsletters which will keep you informed of matters happening in and around the village such as planning information and road closures etc. Please have a look at the site. We currently have over 80 people signed up and we have been getting some very good feedback. Go to www.purtonparishcouncil.gov.uk and sign up today.

Breast Cancer Care Charity Fashion Show

A fashion show where brand new clothes from the High Street are modelled and sold at bargain prices. Purchases can be taken home the same night!

At Wootton Bassett Memorial Hall

Monday 17 March 2014 - Doors open at 7 pm for a 7.30 start

Tickets £5 each

Please call Kirsty on 770094 to order tickets.

Purton Profferings - *Recycle your unwanted items to a new owner here*

OFFERED: Nathon telephone seat and cupboard. Good condition. Tel 770155.

To advertise in this section please contact Purton Magazine (address on [page 4](#)). Free advertisements for Free goods. 2 lines maximum.

Cricklade Country Market

The next Country Market is at *The Club at Cricklade* on Friday 28 February from 9 am to 11 am. Please call Anne on 01793 750125 for more details, to place an order or to become a market producer (baking or growing).

Purton & District Age Concern



We have had a splendid Christmas and new year, which was made possible by all you kind people. To start with we had our Christmas Draw with all the forty-two excellent prizes given to us and I would think we made about £800 clear profit, so thank you one and all. What a lovely first prize the hamper is – it must have had everything you need for Christmas in it. Many thanks to all the traders in the area for accepting our vouchers and being patient for the paying out – with some of you it was a considerable amount of money.

On the Sunday prior to Christmas I went to a lovely Carol Service at the Methodist Church with some nice readings and, of course, carols – a lovely friendly occasion to put you in the right frame of mind for Christmas. Oh, I nearly forgot, we started with a nice tea which isn't the best thing in the world when you are going singing, but all went very well. The carols under the tree on Christmas Eve was another enjoyable evening with a tinge of sadness as this is the last one Mary New will be doing for us. Don't worry, as Mary, being the type of person she is has got Mark Blackwell to take her place and, I must say, he will be an excellent substitute and knows the ropes as he has been playing for the carols with Mary for a good number of years. Graham, Mary's husband, along with his brother and, of course, Mary, have been playing for us at the Christmas Eve carols for twenty-six years. Mind, we have been going a bit longer than that without back-up music. To start, Alan Webb would lead us in and away we would go. We have always had hot punch and mince pies which, in the first instance were supplied by the Maltsters and, of course, Sheila has carried on ever since, so many thanks to Sheila for providing the punch over all the years and it seems to get better every year. Many thanks to Sam and Lawrence for providing the extra lights for the carols – it was lovely with it all lit up and, of course, the snow was the icing on the cake. It is a lovely village occasion which you could imagine happening over many years. At a rough guess I would say there were two hundred people there, so thank you all for coming and making it so successful.

Christmas Day started well for me on going to St Mary's for the 8 am taken by Revd Judith Wells. The bells were ringing out from Lydiard sort of telling people what we were celebrating. On the Sunday after Christmas I went with Sheila to the Methodist Church for their Covenant Service – this is a very special service with people from St Mary's and Braydon joining in. In the evening we went to St Mary's for the nine lessons and carols – it is a lovely service with the bells greeting you. The service is by candlelight – what an atmosphere – and this was followed by a most welcome gesture by the choir providing refreshments after the service so many thanks to all concerned for creating a lovely Christmas spirit – now it's back to reality!

Could I congratulate Mick Looker and his friends for putting up the lights and the Christmas tree on the Institute in all the weather we have had, especially the gales. They certainly made it all very secure – and, of course, thanks to them all for taking it down.

We are going to celebrate fifty years of Purton & District Age Concern with a concert at the Village Hall on Saturday 22 February starting at 6.30 pm. You will

be entertained by the Chedworth Silver Band, light refreshments will be provided and this will all be free to the elderly of our area along with street wardens, minibus personnel and the general committee. There will also be a licensed bar for anyone who wants to buy a drink. Your street warden will have already told you about this event and that we are only accepting names up until 31 January for this. Admission is by ticket only and your street warden will give you one when you have booked in. I know many of you get your magazine early, so this is a reminder to contact your street warden if you haven't already done so.

Now we have to start fund raising. The first event will be a jumble sale on Saturday 8 February at the Village Hall, starting at 2 pm. Good clean jumble can be left at the hall from 12 noon to 1 pm. Following on from this we have our annual Auction at the Village Hall on Saturday 1 March. Items for sale can be brought to the hall from 9.30 am to 11.30 am. You get 75% of the selling price providing the item makes over £2. You can put a reserve price on any item but if it fails to make that price you pay £2 for it going through the Auction, the same as any item that doesn't sell. Viewing is from 12 noon to 1 pm and the sale starts at 1 pm with our usual auctioneer Mr Roderick Wightman. We limit the sale to 250 lots, so make sure you come early.

We are still going to try the first two mystery trips to see what response we get, so it is up to you. Please give it some thought. The first one is on Wednesday 2 April with lunch provided.

TONY PRICE

Miss Elizabeth Ward M.B.E.

As I said last month, there aren't any words great enough to describe a lady such as Miss Elizabeth Ward M.B.E, who devoted her life to helping others. She was educated at private school in Cirencester then, in the war, joined the A.T.S. at a young age. Elizabeth could have been working for the W.R.V.S. as they did a terrific amount of work to help when they could – this would have been helping civilians more than service personnel. The W.R.V.S. meant so much to Elizabeth – am I right in thinking that the old original wooden hut which came from Chiseldon Army Camp in about 1922 as a young man's club, was purchased by the W.R.V.S. and it continued until the 1950s. The Silver Threads was formed by Elizabeth's mother who started the W.I. as well. What pleasures these organisations have given our community and they were always made welcome down at Red Lodge by Elizabeth's mother and then Elizabeth, who had inherited her mother's kindness and sense of duty. It was a lovely idea for money in lieu of flowers going to the Silver Threads.

Elizabeth followed in her mother's footsteps, perhaps not in such a ladylike manner but nonetheless getting things done. With her friend Lavinia Gordon, she started the Luncheon Club and the village has benefited from this marvellous service for some 40 years or so. In the early days much of the fruit and vegetables came from Elizabeth's own garden and was ferried up by her twice a week and she continued her twice-weekly visits to the club until shortly before her death.

My first recollections of Miss Ward were when I was about twelve years old and

a member of the boy scouts who used to meet in the coach house at the Sissells, which is 27 High St., sharing it with Toc H. A lot of weekends we used to go camping at Red Lodge – we had ropes on the trek cart going down Braydon hill to hold it back then, of course, we needed them on the front to come back up. We made a log cabin in the woods by the saw mills and the girl guides, when they came, camped on the house side. The freedom we had in the grounds of Red Lodge was unbelievable, as long as we left it all tidy. There was this attractive lady riding around on a horse – she would always speak but never, in my wildest dreams, did I think she would one day give me a kiss! The only other times that I saw her was perhaps at a fete at Purton House or Hattons' Lodge, when her mother and father hosted various functions.

The Fitzgeralds and Elizabeth's family were very friendly – I believe she was still in touch with Mary Clare who lived at Henley on Thames. In fact, Mary Clare hosted many a tea and the occasional lunch for the Luncheon Club and the Silver Threads on their days out. At one time there was talk in the village that Elizabeth might marry William Fitzgerald but it was only village gossip and Elizabeth remained single.

One person who became a part of the family was Floss Canter who went to work at Red Lodge in 1925 for Captain Ward's stepmother, who certainly wanted her pound of flesh. However, things changed after a year when Captain Ward moved to Red Lodge with his wife. Mrs Ward was very different to the stepmother bringing the servants' sleeping quarters down from the attic, where it was so bitterly cold, finding them room on the lower floors, bearing in mind that there was a kitchen maid, parlour maid, a cook, under house maid, a butler and three gardeners. One of the gardeners was Jill Herbert's father Bob Daniels – in fact, the Daniels had a strong presence in Red Lodge as Jill's grandfather was gamekeeper. Captain Ward was a barrister in London and had invested heavily in coal. The family had to economise after the miners' strike of 1926. Floss continued to work for the family for much of her life, going on holiday with them – well anywhere they went Floss went with them. She loved tennis as Elizabeth did and would have helped her on the tennis courts.

What a host Elizabeth was – she would never put obstacles in the way – cream teas, lunches, open gardens, books and bangers, fish and chip suppers – we even did some breakfasts at Red Lodge when we were raising money for our first minibus. She welcomed everyone with such generosity – what could be better than that lovely Braydon air filled with the smell of bacon. She was an excellent cook, if a bit rough and ready. There was the time she was doing soup for a fund raising occasion and someone asked if it was vegetarian – Elizabeth shouts 'yes of course it is' and murmurs to the lady who was helping 'it's made with ham bones!'. Whether she had vegetarian food on her mind, when the soup was getting low she went to her freezer and found something to top it up. Moments later there was a burst of laughter coming from the kitchen – she had thrown a bag of frozen gooseberries in. Nobody complained and it all went. Her mince pies were the best I ever tasted. One evening I always enjoyed at the farmhouse was her carols for the Braydon parishioners, led by the Braydon Chapel choir – a real Christmas card scene with a log fire burning away. As well as all the entertaining she did for the

village, she always had guests – friends and family enjoying her hospitality – a beautiful place to relax and let the world go by.

Elizabeth loved animals, especially dogs. I assume Jack Russells were her favourite and it is so nice that Chris Herbert has undertaken to look after her dog Maggie. When I was camping with the scouts, I remember there were kennels for three or four dogs near the saw mills. I think these kennels have only been pulled down in the last few years. As everyone knows, Elizabeth was a great hunting fan and she had her own horses. She was the type of person who would take two horses to a meet so that she could change horses when they were tired, and there was a groom to do the necessary for her.

This is what I liked about Elizabeth – she would say what she thought to anyone. When Prince Charles and the two young princes came to a meet at Red Lodge, Elizabeth greeted them and said to the boys ‘You had better go and thank the farmer for allowing you to park your horse box in his fields’. It was a timely coincidence to someone who loved the hunt so much that they were meeting at Hattons Lodge on the day she was taken to hospital and the ambulance had to drive through the hunt. It was a fitting tribute that a member of the hunt played ‘Gone to ground’ on a hunting horn when she left St Mary’s for the last time. I say the last time, because Elizabeth was a regular worshipper at St Mary’s ever since Braydon Church closed some years ago. She liked the 8 o’clock service and I can tell you that, up until last year, she didn’t miss many services and would always give anyone a lift who needed it. How beautifully the Church was decorated to celebrate Elizabeth’s life and what an excellent service Revd Judith Wells gave for her.

Elizabeth loved people and people loved her – what a lovely community it was at Red Lodge. She would host the Parish meetings in her house (the last one was three years ago) and any major problems would come to Purton Parish Council. I know life at Red Lodge and Purton will never be the same but I hope that Red Lodge will carry on in its entirety as it would be a shame to lose one of the last remaining country estates in the area.

With all her kindness, Elizabeth still had a little bit of the old fashioned gentry in her. She met a friend one day for a chat and it came round to a special birthday she had coming up. She turned to her friend and said ‘Didn’t I tell you I am going to your villa in France on such and such a date to celebrate’ – not could I or is it free? Then going into Andrew’s, the butchers, it didn’t matter how many were waiting – she would shout out ‘I want that piece of beef over there’ - but they had the situation in hand and she didn’t get served before anyone else.

Elizabeth was a very practical person – when she was awarded the MBE she went to a charity shop in Cirencester to buy her hat – as she said, she would only wear it once! There was security being part of the Braydon community for Elizabeth. She always said – when asked how she managed without a man about the place – all she had to do was open the window and shout, ‘Ben, Ben, Ben’ and, if he didn’t come, one of his sons would. Rita, Ben’s wife, has been such a great help to Elizabeth – a true friend and the friendship goes back well over 75 years from when Rita lived at Maple Sale Farm, Braydon, and would go to Red Lodge with her brother Pete to play tennis with Elizabeth and have tea.

She loved her tennis, both playing it and watching it – in fact, during Wimbledon she would be glued to the TV for the whole fortnight. Another of her loves was horse racing.

We, in Age Concern, were so lucky to have a president of Elizabeth's nature and involvement. She would try to come to all our events and, if she couldn't, she would ring me up and say 'get me £5's worth of raffle tickets and I'll give you the money when I see you'. She always did but there weren't many events she missed. We all had tremendous respect and affection for Elizabeth and I would rank as a very special occasion the day I was asked to see if Miss Ward would be our President following the death of our long-standing President Eric Webber. I was very nervous and I rang up to see if I could go down to Braydon to see her. When I arrived, we sat down and she asked if I would like a drink. She poured out a drink for us and I asked her if she would consider being our President – I have never seen such pleasure in a person. She got up, put her arms around me and gave me a kiss and we drank to her new role. I never imagined that the glamorous lady I saw at Red Lodge when I was a boy would one day give me a kiss and I felt so proud that she thought it was an honour to be our President.

Goodbye Elizabeth and thank you for being the person you were and for all the lovely memories you have left us.

TONY PRICE

Mr Stuart Bond

Sadly we have lost another true Purtonian in Stuart Bond. Stuart, in latter years, has not enjoyed the best of health – in fact, he retired early. I say true Purtonian but I am just assuming this as his mum and dad were caretakers of the Institute as it was then, without the village hall and car park. Well that's not exactly true – there was a small cinder-surfaced car park which took about six cars. The rest was garden and, I might add, an immaculate one, as Stuart's father Les Bond used to do a lot of showing. In fact, along with Jesse Reason, Charlie Seymour, Albert Clifford, Les Smith and one or two others, used to run a flower show in the dance hall at the Angel once a year. Stuart and I had quite a bit in common when it came to schooling. I am hopeless at spelling (don't worry Sheila always checks mine now) and I have heard that Stuart was the same when it came to spelling lessons. The teacher would ask the children to give her a word for the class to spell. Stuart would always put his hand up first and the word was always the same – Mississippi – he knew that one off by heart.

One thing about living at the Institute – you would, I expect, get free admission to Fred Hancock's film shows that used to be on Thursday evenings. He used to sit up in the balcony with his father and at half-time they would go down to where the library is now and serve refreshments. It was called the refreshment rooms and it had a counter with two lovely copper urns at each end. Les Bond, if I remember correctly, had a little Austin Seven car and he used to take Stuart and Jim Baker down to Braydon pond or Charlton pond – whatever you want to call it – fishing. Jim had to sit on the near side in the back seat as the rear wheel on the off side was bald. This went on for two or three years – no tyre regulations then. I bet Stuart

enjoyed a bit of fishing as he loved the outdoors. Is that why he enjoyed hunting as he was a great supporter of the VWH Hunt.

Another of Stuart's loves when he was younger was scouting. He was a member of Purton Scouts – they met at the school but when they had to get out of there they went to the old Chapel in the High Street. There was work to do as it was in such a mess – they scrubbed floors and decorated it – they had to get on with it to make it a suitable place to meet. Stuart went on to be a Rover Scout and also became a Scout Leader – this was at Dowling Street in Swindon, not Purton as that is where the main Scout Hall was.

Stuart was always interested in wood and served an apprenticeship in British Rail as a wood machinist. I started work in '2 Shop' in GWR as it was then, which was a big machine shop, so I expect Stuart would have gone through there. The timber came in as trees and went out in all sorts of forms of wood to be used to build the coaches in the Body Shop. I am not saying any more about Stuart as Sarah, his niece, who is more qualified than I am, would like to pay her tribute to her uncle Stuart, which is much more appropriate as he was a family man first and foremost. Could I thank Margaret and Bill and the rest of the family for money coming to Age Concern in lieu of flowers.

TONY PRICE

Sarah's tribute to her uncle Stuart

You were my uncle Stuart, although I used to call you Stew or Stewy. I'm sure we all have our own special memories of you.

My most poignant memories of you go back to my childhood. I think of the trips you took us on – Gran, me, mum and sometimes Dan the Jack Russell, piled into the Maxi (you always loved your cars). Whipsnade, Minchinhampton Common, Clifton Downs, Bristol Zoo and, most of all, Weston-Super-Mare. There were picnics and ice creams. You were always generous with your time. There were Christmases too and Boxing Days at Gran's. You'd always remember the Quality Street or Roses – and the sherry. You liked your photography too in those pre-digital days, you'd capture the memories on slides and reels of cine film and you loved your Westerns. I grew up and moved away but you never forgot a birthday or Christmas.

Your health wasn't always the best, but it didn't stop you doing things and, living with a chronic condition, keeping your independence is itself quite an achievement. You liked your meals in Morrisons and MacDonaldis, but you could cook too. And not just ready meals – you read proper cook books and left a legacy of homemade pies in the freezer. You made the best of things, and not just for yourself. You were no socialite but you always had time for others. A friendly word, a lift to the hospital, shopping for the housebound. You weren't always that big on words, you weren't into committees or things like that, but you were always there, in the background, loyal, dependable, willing to help when you were asked. It sounds a cliché, but you were a really good egg. You loved your trips, especially to Cornwall and to National Trust properties. You followed the hunt by car and on foot in all weathers and that's how I'll choose to remember you. Outdoors, in your green wellies, enjoying the countryside you loved so much.

Mr George Allsopp

Sadly another person that has died is George Allsopp, perhaps not known to many of you but, if you lived at the top end of the village, you would have seen him going down to the shops – in latter years he was quite bent over. During the last two years he has been at Ridgeway House at Royal Wootton Bassett but for the last four weeks he was in hospital. If you counted the time George has been around our village and Braydon you would have thought he was a Purtonian but no, George was born in Tockenham in July 1929 to George and Amelia Allsopp. His father was a farm labourer and the family moved to the Leigh as I believe, in those days, farm labourers' contracts only ran for a year, starting on Lady Day – someone will tell me if I am wrong. George went to school at the Leigh and lived there – his father went on to work for Jerry Miles at Maplesale. Sadly George's mother died when he was four years old so he didn't have a very good start in life. He also had a sister Betty who unfortunately was sent to a Convent to be looked after when their mother died but I think they knew one another.

However, George's father remarried to Dolly who was a member of that well known Purton family, the Bunces. Things started to look up for George as his stepmother had two more children, Dick and Mary. George's father, as I said, worked at Maplesale farm and would ride a bicycle from the Leigh and George, it is said, would run from the Leigh along with his dad, catching hold of the saddle – that would have been about three miles – how old would he have been I wonder? Anyway, things moved on a bit as they were allocated a tied cottage at Maplesale – there were a pair of them and the Allsopps had one and the Waldrons lived in the other. However, sadness was to happen again as George's dad died and, because of this George's stepmother started working on the farm, milking twice a day. George was only thirteen at the time so he left school to work on the farm as well to make sure there was enough input to hang on to their cottage. What a hard life for a man so young, losing both his parents and then having to be part of the bread winning team but George, being the type of person he was, would have made the most of it. He was about to have another twist in his life as Captain and Mrs Ward were looking for a new groom and they took on Mr George Harman, who had previously worked at Birdlip. George was a widower and brought with him his three children and they lived in a bungalow on the Red Lodge estate. It was a wooden bungalow called appropriately Edge Wood – it is only during the last couple of years that it was knocked down and a new one built.

Now I am not sure whether George's stepmother went to look after Mr Harman's children or perhaps it was a romance that blossomed because the west drive to Red Lodge was opposite the one to Maplesale and, as I have said, there was a lovely community spirit at Braydon, especially in this case, as Dolly married George Harman and went to live at Edgewood. George had found a new job and was very happy working at Pound Farm on the Red Lodge estate for Mr and Mrs Bird. They valued George and he became part of the family. It was a new life for him – Jennifer was the Bird's daughter and her children used to go the farm a lot – in fact they would spend all their summer holidays there. They loved George and he was very patient and kind

with them and anyone who knew him would say that's how he was. What about the day the little girl got stuck in the mud in the farm pond and started to panic and was in fear of drowning. Her little brother went running back to the farmhouse and who did he shout for? It was George who went running out straight into the pond and saved the little girl. Mind he was in a mess with the mud all over him but he only smiled – saving the little girl was the most important thing. It was a bit unusual for George to be in that state as he was always so clean and tidy. In fact, Mrs Bird always insisted that George would be the one to clean the dairy after milking. It had to be done with soapy water and she knew that George would leave it spotless.

George loved music – how about this for enterprise – he had a gramophone in the cow shed and he could play his own style of music. I expect there were a few country and westerns among his records as he loved square dancing at Minety Village Hall. He also loved ballroom dancing and was so light on his feet but he didn't go dancing locally but who knows what he got up to when he was on holiday as he always went to Butlins with Ken and Johnny Ponting, Harry Hedges and Reg Roberts. I bet they had some fun as well as the dancing. I don't think there was a Butlins they had not been to. Another of George's qualities was that he had an excellent memory – I wonder if he joined in any of the games at Butlins when it was memory questions they asked you. I do know that he was brilliant at music quizzes.

When Mr Bird retired from farming, George went to work at Hill's at South Cerney then on to Clare's (they made trolleys) finishing up at Wises (the bakers) – I think they made cakes for Marks and Spencer's – then he retired. He was already living in Blacklands with his stepparents and he looked after them so lovingly – he more than repaid them for how they looked after him – and then his step-family looked after him when he needed it. In fact, George lived at Blacklands for 22 years before moving up to Dogridge, finishing up at Ridgeway House at Royal Wootton Bassett.

What do you admire about George – his kindness and willingness to help others, his cleanliness – his home was spotless as he was himself – his politeness – in fact you would say he was a perfect gentleman. One thing I shall remember about George – he always sent us a little note thanking us for what we did and for the Christmas voucher. We thank the family for money in lieu of flowers coming to Age Concern. What a marvellous place the world would be if it was made up of George Allsopps!

TONY PRICE

A postscript – can't you easily be shot down in flames and have your ego knocked out of you. I was trying to find out a few things about George and I spoke to Jennifer, whose father used to employ George. Jennifer was in my class at school and I haven't seen her since we left. She said how nice it was to speak to me. 'I always remember one special thing about you'. My heart started beating a bit faster and I asked her what it was. The answer brought me back to earth. Canon Willis used to come to school about once a week and he was saying to us that you could always tell who was sincere by how they cleaned their shoes. 'Let's have a look – who cleans their shoes where people cannot see (the instep)?' I was the only one with a clean instep and that stood out in Jennifer's mind for sixty-seven years. I didn't tell anyone it was a new pair of

Robert Miles

Just after Christmas I was very sorry to hear that Robert Miles had died.

I was with Robert on committees for both Helping Hand Carnival and Purton & Lydiard Charity Fund and he spent many hours working tirelessly for both charities. Robert was always there to set up, tidy away, and work in between any event that was planned. He even involved his gran, and I will always be grateful to her for folding up hundreds of raffle tickets and pushing them into straws for our pick a straw competitions.

It is my regret that I did not keep in touch with Robert over the past few years, with the exception of waving as we passed each other in our vehicles. Wherever you are Robert, thanks for your help.

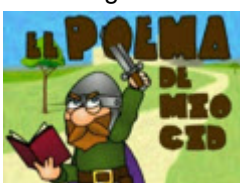
LYNDA WARREN

Obituaries

Purton Magazine is always happy to include obituaries. If you wish to have us publish an obituary of a loved one, please send it via the contacts on [page 4](#) of the Magazine.

Spanish & French Books Available

For Christmas I was given the latest Arturo Perez Reverte novel – a page turner if ever there was one! And it made me think that I have a book case of Spanish books and books about Spain which sit collecting dust and might be of interest to others. Chronologically



they start with the *Poema de Mio Cid* a simply wonderful medieval epic poem about the soldier who in reality is a bombastic mercenary and really more of a hoot than a hero. Of course there is Don Quixote which sadly isn't read nowadays as avidly as it was in, for example, the 18th century when it was highly regarded for its moral values as well as for the wonderful language and, most of all, for its humanity. Well Cervantes hadn't been a slave in the galleys for nothing.

Trundling obliquely through the 19th century you get later to the flowering of the Latin American writers: Garcia Marques, Fuentes, Vargas Llosa etc and up to the present day. And the poetry – from Gongora (what an imaginative wordsmith) to Guillen (I think my favourite poet – definitely one for the Desert Island! And, incidentally if you've ever had trouble with the difference between *ser* and *estar* there's a poem that sorts it out forever!!)

I also have a comprehensive French bookcase with classical writers well represented – Racine (oh what passion); Corneille (don't bother); Moliere (so witty). Then a lot writers you might expect, Balzac, Zola and other 19th century giants. And in terms of modern writers: Cauvin (funny); Japrisot (clever detective stuff); Pierre Lemaitre (spooky thrillers) – and the latest an absolute wow – *Le Chapeau de Mitterand* a delightfully entertaining confection by Antoine Laurent.

So they are all here for anyone who is interested and would enjoy a good read. Contact me on 01793 770525 or carolineemclean@yahoo.co.uk

CAROLINE McLEAN

Wiltshire Good Neighbours



Are you a Carer?

This month I am writing again about the role of Carers. Did you know that it is estimated that more than 10% of the UK population are Carers? In the 2001 Census that was almost 2 million people. It is thought that there are many more people out there who are Carers, but who do not see themselves as having that role.

“In sickness and in health” is part of the marriage service and many people feel that their Caring role is part of it too. But the Authorities also feel that all Carers should be recognised for their important role no matter what the circumstances.

“Caring” can take many forms but basically “a Carer is someone who, without payment, provides help and support to a partner, child, relative, friend or neighbour who could not manage without their help. This could be due to age, physical or mental illness, substance misuse, eating disorder or disability” (Carer Support Wiltshire definition). Caring can include helping with personal things such as getting someone dressed, helping them move about or giving medicine. Caring also includes helping around the home with shopping, laundry, cleaning and cooking. A Carer can also help and support by filling in forms or managing money.

For people of working age, Carer’s allowance is the main benefit for Carers. If you look after someone who gets a disability benefit, for at least 35 hours each week, you could qualify. Carer’s Credit is available to people who provide care for a disabled person for 20 hours or more each week, where they do not currently receive Carer’s Allowance. It is a National Insurance credit which helps Carers build up qualifying years for the basic State Pension and additional State Pension.

Finance and money are often a concern. Take the opportunity to have a benefits check to make sure you are claiming everything that either the Carer or the Cared for are entitled to such as: PIP or Attendance Allowance, Carer’s Allowance or Carers Credits for the Carer, Council Tax discounts and discounts on fuel bills if you receive certain benefits.

For Carers of pensionable age, Carers Allowance is not payable, but there are one-off benefits which you may be entitled to. Contact me for more details.

Carers Assessments are a way of identifying your needs as a Carer. They look at your role and how being a Carer affects you; how much Caring you can realistically do and what extra help you may need.

The Carers Emergency Card is an initiative run by Wiltshire Council. It will identify you as a Carer and in the event of an accident or emergency, contact will be made with those you care for to ensure their safety and wellbeing. It is a credit card size to fit in a wallet or purse.

Carers are entitled to a Carers Library Card which entitles you to borrow books from libraries for six weeks instead of the usual three. Carers and those they care for may also apply for the Home Library Service. This service is provided by volunteers who work with you and library staff to deliver books, talking books and DVDs fortnightly or monthly to the Carer’s home.

If you would like to know more, or just to chat over your own situation, please email rwbrickladeqnc@communityfirst.org.uk or call me, Ellen Blacker on 07557 110414.

PURTON POSTBAG

The Editors reserve the right not to publish letters received where space and content dictate. No correspondence can be accepted for publication without the proper name and address of the correspondent being supplied. However those details may be withheld from being published if so requested.



■ ELIZABETH WARD

Elizabeth Ward of Red Lodge, Braydon, died peacefully on 28 November 2013, and her life was celebrated in a service on 13 December at St Mary's Church, Purton. Elizabeth had lived her life with warmth, generosity and bursting energy. Her family was delighted that so many whose lives she had touched were able to attend the service and return to her home afterwards, as she had wished.

The family is extremely grateful for all the kindness and help received from people in Purton and Braydon and fully realise how much hard work went into ensuring that everything operated smoothly. While it is perhaps invidious to name just some of these friends and helpers when so many people were involved, we want to thank particularly the whole of the Gough family, especially Rita and Ben, and also Jill and David Herbert for all their support not just relating to the funeral but over very many years. We also wish to thank Howard Smith and his team for dealing with car parking at St Mary's and Janice Simpkins for the beautiful but informal and natural flower arrangements in church which were so in keeping with Elizabeth's personality. There are so many others whose names we do not know, but we thank you all.

She will undoubtedly be missed, but as is evident from so many kind condolences and offers of help, she will not be forgotten.

from Elizabeth's family

■ STOLEN PURSE

On 18 December my purse was stolen by a patient being treated at the Great Western Hospital, which was captured on CCTV cameras. The purse contained £200 for Christmas presents, my driving licence and debit card (which was cancelled immediately).

The police told me it was found but since have said it was not, so this patient (if you can call him that) got away with it.

Also there was £40 of vouchers which have now been replaced by Age Concern and the Helping Hand. I was told this at Andrews the Butcher's where he was so good to let me know I did not have to make up the £40.

How lucky we are to live in a village like Purton; so much kindness from so many people. After such a traumatic experience, it brings it home how good people are, not all like the creature who stole my purse and probably enjoyed my money and driving licence besides mementos which were also in the purse.

Anyway, I cannot express my thanks enough to such a caring community.

Thelma Costello

■ A LETTER OF THANKS TO THE PURTON AGE CONCERN TEAM

Following nearly thirty years of leading the wonderful Christmas Eve celebrations of Carols with the Carollers Brass group, in the open air in the centre of Purton under the always magnificent Christmas tree, I wish to say an

appreciative 'Thank-You' for the surprise presentation of Christmas flowers as I handed over the organisation of this special event to Mark and Susan Blackwell. Mark has been the lead cornet player of this group for several years and knows the format well.

My thanks to Age Concern for asking me to lead the singing for all these years and for their continued support, (not forgetting the refreshments!!) and we must also thank all of those people who turn up year after year to sing and to

make it such a happy event, no matter what the weather may throw at us. They made it feel like a big family get-together and it has been a privilege to be involved in these celebrations with you all.

My reason for retiring is to share Christmas with my Grandchildren who all live many miles away and who seem to be growing up too quickly! Please keep up your support for this well-established event; it is so worthy of continued success. Thank you.

Mary New

Volunteer Centre Wiltshire

Do Something New in 2014!

Have you made a New Year's resolution to try something new, help others, get involved in your community? Then we can help. Whether you've got a few hours a month or a day a week there's a volunteering opportunity out there to suit you. Here are just a few of the 2000 opportunities we have in Wiltshire:



- Marketing Adviser for Wiltshire Community Bank
- Become an advocate and support individuals to ask for the information and services they need in order to improve their own health and well-being with Swan Advocacy Network
- Raise awareness of certain health issues and help reduce stigma as a Health Champion Volunteer for the 'Stripping it Bare' campaign
- Help at events and activities organised to raise funds for the Red Cross

We also have details of various gardening and environmental, befriending, mentoring, IT, administration and many other roles.

Still unsure? Here is what some of our volunteers have said about volunteering:

- "Volunteering has done me the world of good"
- "Volunteering is a great way to widen your social circle"
- "Volunteering has given me the confidence to take charge of things rather than letting things happen"
- "I would recommend volunteering to anyone"

So make the most of 2014. If you'd like to start volunteering get in touch and we can help find the best role for you. Visit our web site: www.volunteercentrewiltshire.org.uk or call our Volunteering Adviser on 0845 5216224.

Church Floodlighting

With thanks to those who have sponsored floodlighting of St Mary's Church.



- 12 February In loving memory of **Tina Kinnett** who would have been 71 on 12 February. So very sadly missed and loved always, Don, Donna, Gary, Paul, grandchildren and great grandchildren.
- 14 February St Mary's will be floodlit on for the treasured memory of **Agnes Newman**, born Agnes Bell on Valentines Day 100 years ago.
- 14 February In memory of **Sheila Osborne** with love from Peter, Simon, Tip, Myles, Mem, Olivia and Ella.
- 15 February St Mary's will be floodlit in loving memory of **Ron Gunter** a dear husband and uncle, on the 13th anniversary of his death. Loved and remembered by Betty and family.
- 19 February The church will be floodlit in memory of **Monica Kinnett** whose 67th birthday would have been on 20 February. With love from Pete, Mandy, Paul, Jenny, Jerilyn and family.
- 20 February **Gerty Holland**, on her birthday. From all the Holland Family.

Please note: New Floodlighting contact: Sandra Horsnall: 770157 for the next few months.

If the lights don't work, for any reason, we offer apologies and, of course, another floodlit evening for free, or your money back.

These things happen occasionally and it is really disappointing for all concerned. We can only try our best.

Philippines Disaster Evening

Our Philippines Disaster Evening on Saturday 14 December managed to raise the amazing sum of £1,217.

Thanks to the bands who performed for free providing the music for the evening, *Breeze* and *Soundbites*. To all who gave raffle/auction items; to those who gave their time and to everybody who turned out on such a rotten night.

Thank you Purton!

TONY & SUE RICHARDSON

Purton Guide Dogs

As the Trading Secretary for the Swindon & District Branch, the beginning of January was taken up with Stocktaking, then after that it was making and putting up the Jumble Sale Posters. How well we got on will be reported in the March Magazine.

Many thanks for everybody's continued support.

BRIAN DAVIES, for the Purton Support Group



Purton Magazine 10 Years Ago ...

In the February 2004 issue, the Purton Historical Society were, along with others, bemoaning the inevitable conclusion that Beagle 2 should have reported back by now on its mission to Mars. Professor Colin Pillinger was a regular interviewee facing many awkward questions about the fate of the space craft when no one could really know what had happened. To put that in a 2014 context, India successfully launched its first Mars Spacecraft in November last year and, at the time, was scheduled to travel for 300 days before being ready for entering Mars orbit later in 2014.

Much nearer to home – but perhaps not in terms of a mystery – was the news that the Last Supper painting was nearing the end of a painstakingly careful restoration in Bristol. New readers might not know that the painting now safely returned to the reredos below the east window in St Mary's church was stolen 20 years ago and recovered in Florida in 1998 – a story in itself that was told in Purton Magazine later in 2004. However, the painting was in such a bad state that it would take 6 years to restore.

Right at home and maybe without any mysteries, Purton football club's first team had remained unbeaten in 19 Hellenic League games with 13 wins and 6 draws placing them proudly at the top of the league; Eurshell Fearon was the leading scorer at that stage with 11 goals.

But it wouldn't be Purton without a few things being the same, would it? Tadpole Lane was scheduled to be closed for 7 days in February 2004 while a new sewer was being constructed.

On The Lighter Side

Roger, was buying an expensive bracelet, to surprise his girlfriend on Valentine's Day, at a very smart jeweller's shop in Hatton Garden, London.

The jeweller inquired, 'Would you like your girlfriend's name engraved on it?'

Roger thought for a moment, grinned, then answered, 'No, instead engrave "To my one and only love".'

The jeweller smiled and said, 'Yes, sir; how very romantic of you.'

Roger replied, 'No, not romantic, just practical. This way, if we break up, I can use it again.'



Purton Diary - February 2014

1	Sa	7.30pm	Curry Evening, Silver Threads Hall (limited tickets)
2	Su	8.00am	Communion at St Mary's Church
		10.30am	Gift Day Service at the Methodist Church
		10.30am	Songs of Praise/Back to Church Sunday at St Mary's Church
		4.00pm	Christingle Tea & Cake at St Mary's Church
		5.00pm	Christingle Service at St Mary's Church
3	M	12.30pm	to 2pm: W.I. Soup 'n Sweet at Silver Threads Hall
6	Th	10.30am	Communion at the Vicarage
8	Sa	2.00pm	Age Concern Jumble Sale at the Village Hall
		4.45pm	'Thanksgiving for Marriage' service: The BIG Promise.
9	Su	8.00am	Communion at St Mary's Church
		10.30am	Morning Worship at the Methodist Church
		10.30am	Communion at St Mary's Church
		6.00pm	Evensong at St Mary's Church
10	M	7.30pm	Purton Parish Council meeting at Village Hall - press and public welcome
11	Tu	11.00am	Songs of Praise at Ashgrove House
		7.00pm	for 7.30pm: After 8: "Late Christmas Meal" at The Bolingbroke
		7.30pm	Purton Yacht Club at The Angel
12	W	2.30pm	Methodist Women's Fellowship at Hooks Hill with Roger Mugridge on 'Lights for Learning.
13	Th	10.30am	Songs of Praise at The Cedars
		7.30pm	PADS Panto <i>Trouble in Fairyland</i> at Village Hall
14	F		Valentine's Day
		9.30am	Age Concern minibus to Swindon
		7.30pm	PADS Panto <i>Trouble in Fairyland</i> at Village Hall
15	Sa	2.30pm	PADS Panto matinee <i>Trouble in Fairyland</i> at Village Hall
		7.30pm	PADS Panto <i>Trouble in Fairyland</i> at Village Hall
16	Su	8.00am	Communion at St Mary's Church
		10.30am	Morning Worship at the Methodist Church
		10.30am	Communion at St Mary's Church
		6.00pm	Evensong at St Mary's Church
18	Tu	7.45pm	Royal British Legion at The Red House
19	W	2.00pm	Communion at Ashgrove House
		7.30pm	Purton Evening Women's Institute at Village Hall: Yvonne Lockhart – <i>Brush away winter blues</i>
22	Sa	10.00am	to 4pm: Re-opening of Purton Museum
		6.30pm	Celebration of fifty years of Purton & District Age Concern, Village Hall with Chedworth Silver Band.
23	Su	8.00am	Communion at St Mary's Church
		10.30am	Morning Worship at the Methodist Church
		10.30am	Communion at St Mary's Church

		6.00pm	Evensong at St Mary's Church
25	Tu	2.30pm	Songs of Praise at White Lodge
		7.30pm	Gardeners' Guild at Silver Threads Hall: Roger Umpelby - <i>War in the Vegetable Garden - Pests and Diseases</i>
26	W	3.30pm	Communion at The Cedars
27	Th	7.30pm	Historical Society at Village Hall: Geoffrey Tappern - <i>History of money</i>

March

1	Sa	1.00pm	Age Concern Annual Auction at Village Hall – viewing from noon
		7.30pm	to 11.30pm: World Challenge Disco at Village Hall

Every week

Tu	9.15am	to 11.30am: Purton Toddler Group at Village Hall
	7.30pm	Bridge Club at the Red House
W	10.00am	to 12 noon: Coffee and Chat at Silver Threads Hall
	6.30pm	Rock Solid at the Methodist Church
Th	9.15am	to 11.30am: Purton Toddler Group at Village Hall
Th	11.15am	to 1pm: New Beginnings at Purton Youth Centre
Th	2.00pm	to 3pm: Age Concern T'ai Chi at Millennium Hall
Th	2.30pm	Pram Service for pre-school children at Methodist Church

Moon Phases

6 February
 14 February
 22 February
 1 March

If your Club or Organization's Events are not included in the Diary Pages, let us know:

Purton Magazine c/o In Touch Services, 115 Pavenhill
 or email mail@purtonmagazine.co.uk

Please note: priority is given to events which are open to everyone.

Coffee and Chat

We meet every Wednesday from 10 am until noon at the Silver Threads Hall. We play Scrabble, cards, dominoes and other games, or you can just 'sit and chat'. If you want some company, come and join us – a welcome awaits.

BOB TINSON

Afternoon in February

The day is ending,
 The night is descending;
 The marsh is frozen,
 The river dead.
 Through clouds like ashes
 The red sun flashes
 On village windows
 That glimmer red.

Henry Wadsworth Longfellow

Back to Church Sunday

Your Church needs you. In years gone by were you a member of St Mary's or Purton Methodist? Were you a part of the Church Family and then something happened? Maybe someone offended you? Perhaps there were changes at Church which did not suit you? Maybe you faced some difficulty or tragedy which made it hard to meet others? Perhaps you just got out of the habit and drifted away?

Whatever the reason we miss you and would like to welcome you back. Christ calls all of us who are Christians to be a part of His body. He says we "*are one body in Him*" and so if any of us are missing then both we and the Church are incomplete. This year St Mary's is offering a special welcome on Sunday 2 February – so why not come Back to Church that day? Your Church needs you and just maybe you need your Church!

What's happening at St Mary's on 2 February 2014

8.00am Holy Communion – Traditional Prayer Book Service

10.30am Strictly Come Singing - Together we will sing God's praises and remember why it is important to be a part of God's Church – including an opportunity to vote for your favourite hymn (see opposite for details).

4.00pm Family Tea and Cake before Christingle

5.00pm Christingle – Come and celebrate the light of Christ and remember why He came into the world – come away with an edible reminder

If you would value prayer or a visit from a member of the Church, please contact myself, Revd Judith Wells or Revd David Perkins our contact details are on the inside front page of this magazine. Why not come Back to Church on Sunday 2 February?

Your Vicar and Friend,

Revd IAN TWEEDIE-SMITH

Prayer for Purton

This month the churches in Purton are praying for everyone who lives or works in *Blacklands, Red Gables, Highridge Close and The Masons*.

If there is anyone or anything that you would like us to pray for during our Sunday worship, please contact Revd Ian Tweedie-Smith, Revd Judith Wells or Revd David Perkins. Their contact details can be found on the inside cover of this magazine. You can give as much or little information as you wish. We don't even have to know a name.

We Record ...

Funerals:

13 December Elizabeth Anne Ward (88) at St Mary's Church

To add your family announcements to this section contact Purton Magazine. Addresses on [page 4](#). We are happy to include births, marriages, deaths, special birthdays and anniversaries, exam successes ...



Strictly Come Singing

Come and help us find out Purton's favourite hymn (at 10.30 am on 2 February). If you would like to nominate a hymn then phone 01793 773035 or email administrator@stmaryspurton.org.uk deadline for nominations for this service will be 12 noon on Tuesday 28 January (just after this magazine is delivered). Later nominations will hopefully be included in the next "Strictly Come Singing" service. Come and vote on the day to see which hymn wins this round of "Strictly Come Singing". If you choose a hymn you might like to include your name and a sentence of why you like it or why it's important to you.



Christingle

A service (at 5 pm on 2 February) for children and for all who are young at heart. There will be readings and songs to help us to see the world with God's eyes and why Christ needed to come. Every child will receive a Christingle Orange.



During the service we will receive the Children's Society collecting boxes to support their vital work with children and young people in desperate need. Collection Boxes will be available via St Mary's School or by contacting St Mary's Church (details above) or direct from Children's Society, where you can also find out more about their important work www.childrenssociety.org.uk/christingle At the end we light the candles as a reminder that Christ came as "The Light of the World."

We are having Family Tea & Cake first at 4 pm. All are welcome, please come and join the celebration. For more information (or if you would like to contribute a cake) please use the contact details above.

The BIG Promise

For many of us marriage vows are the most long-term promises we ever make – to love and care for someone else for the rest of our lives! They are life changing – and have a huge impact on the way our lives work out. For those that make them they are 'the BIG Promise'.

As part of Marriage Week this year (7-14 February), services are being held across the country to give couples the opportunity to reaffirm their marriage vows to each other and for us all to encourage and support couples in their marriages. These services are being coordinated so that the reaffirmation of vows happens at 5.15 pm on Saturday 8 February in all venues- as part of a World Record attempt of simultaneous reaffirmation of marriage vows!

Couples who would like to reaffirm their vows, and those who wish to support and encourage marriage, are warmly invited to the 'Thanksgiving for Marriage' service at St Mary's Church, Purton starting at 4.45 pm on Saturday 8 February. The service will be followed by refreshments and an opportunity to chat afterwards. For further information call Paul Dempsey (770826), Revd Ian Tweedie-Smith (770077) or Revd Judith Wells (770627).



Transforming Purton Parish - Our Safety (Part 2)

Parking on Double Yellow Lines

The use of hazard warning lights to give temporary “permission” wherever and whenever that driver chooses because “*I’ll only be a few minutes*” seems to be on the increase. What that driver fails to appreciate is that that vehicle may be the 30th or 40th to park in that spot “*for just a few minutes*”. The law is broken dozens of times a day in the parish by the irresponsible behaviour of quite a few individuals.

The responsibility to deal with this is not with the police but with Parking Services of Wiltshire Council. The procedure that is followed is that when a car is parked on double yellow lines, Parking Services passes on the report to the Supervising Civil Enforcement Officers who will then pass the information on to their officers who will make note and investigate when possible. The overall aim is to provide sufficient enforcement in order to prevent any wrongful or improper parking. However,

enforcement levels are determined by the resources available and unfortunately there are occasions when a contravention occurs but no officer is in the area in order to issue a Penalty Charge Notice. This gentle policy may work in some areas but at the top of Hoggs Lane, dozens of drivers decide to park temporarily on double yellow lines while they visit the shops. As in the photograph [above right] parking on the double yellow lines obscures the traffic coming from Pavenhill and so cars exiting Hoggs Lane constantly have near misses since most cars coming from Pavenhill look to their right (towards Restrop) and then zoom round the corner to their left.

After monitoring this for more than a year, *Ps and Qs* considers the current approach to parking on double yellow lines is flawed and produces no measurable improvement. Another way is needed.

Parking on Pavements

Parking on a pavement is not itself breaking the law – obstructing the pavement, by parking across it, is. Again, it seems that because it may be only for a short period that it is alright, despite displacing wheelchairs and buggies and just the ordinary pedestrian on to the road – it is alright.

The responsibility to deal with this lies with the police and the procedure



Parking on double yellow lines outside the post office (before its move) and at the top of Hoggs Lane

Parking and obstructing pavement



that is followed is that when a car is parked on the pavement and is causing an obstruction, the police can prosecute if they see it themselves. They do not prosecute even if sent a photograph in real time unless they can get to the location and the offending vehicle is still there. Resources typically do not allow that. Retrospectively, local officers are tasked to offer words of advice and deal with any offences that they come across.

After monitoring this for more than a year, Ps and Qs considers the current approach to parking on pavements is flawed and produces no measurable improvement. Another way is needed.

In one unique situation, a car was permanently parked in the lay-by on Restrop Road for several weeks and was only moved a few days before the road fund licence expired. This is a popular lay-by for long term parking since there is no time restriction.



*Long term parking in the lay-by
at the Pavenhill shops*

Since then, the vacated space has been taken by a car of a nearby resident thus blocking it again, for those who wish to park for a few minutes to visit the shops. Again, after monitoring this for more than a year, Ps and Qs considers the current approach to parking in public lay-bys is flawed and produces no measurable improvement. Another way is needed.

The *Ps and Qs Foresight and Resilience Plan* called for a more radical approach to parking issues.

The full report, *Transforming Purton Parish*, is freely downloadable from www.CarbonBrake.com and there is a hard copy in Purton Library. If you want to find out the latest on potential housing developments at Widham Farm, Restrop Road, and behind Jewel's Ash, and much more simply go to www.CarbonBrake.com and subscribe to my email alerts.

RICHARD PAGETT (secure@richardpagett.com)

Purton Historical Society

As already reported in the January magazine the annual Christmas social on 6 December 2013 was an enjoyable and successful evening.



Future Meetings – now held at Purton Village Hall

Thursday 27 February 7.30 pm – 'History of Money' – Geoffrey Tappern

The presentation will give an overview of the history of money from bartering up to present day systems. It will include the start of 'coins' from India, China and Greece, show early trade routes, the effect of the Spanish Colonies on trade, the impact of wars on the wealth of countries and alternatives to coins and notes. Examples will be available of early coinage.

New members and visitors are always welcome.

TONY & JAN NEATE

First World War Centenary

Wiltshire's Great War Community Event

We are busy preparing for the meeting to be held on 20 January, at the Red House, and anticipate a good response from the interest shown so far. The role of the Purton Historical Society is to facilitate appropriate commemorations of the disastrous event that changed forever the lives of the whole population of this country, the people of Europe and other parts of the world.

If our mission is successful many groups and individuals connected with the village will research what happened, the stories of those who served and what life was like for all parts of society during the war years. It is vital that we consider the impact on families who lost loved ones and the difficulties for those who returned and suffered for the rest of their lives. Some of us remember fathers and grandfathers who never spoke about what they had endured.

On the 20th we intend to show a short award-winning film, made in Wiltshire and concerning Chippenham, and several speakers will outline events taking place in our area. In Purton we already have a significant exhibition in preparation. PADS have impressive plans for a major village presentation involving many people of all ages to be performed in various locations setting the scene at the outbreak of the war.

The first date has been set. On the afternoon of Sunday 3 August the Royal British Legion have arranged for a commemorative Service to be held in St Mary's Church to which everyone will be invited. WW1 was declared on 4 August 1914.

Thank you so much to all of you who have agreed to become involved, whether you are representing organisations or as individuals. This is a serious undertaking and will result in a deeper knowledge and understanding of all aspects of WW1.

We must never forget.

JEAN BELT

Purton Museum

December 2013 proved to be a very fortunate month for Purton Historical Society. The Museum was granted a renewal of its Accreditation Standard awarded by the Arts Council. Several members of the committee spent many hours on the volumes of paperwork attached to this award and their hard work is much appreciated. Secondly, a grant was confirmed from the Cricklade & Wootton Bassett Board for the appropriate archiving and conservation of the Roy a'Court photographic donation.

As advised in previous editions of the magazine the museum will be closed until 22 February 2014. On this date an exhibition will be mounted by Purton Age Concern which will remain until 30 April 2014. We hope that you will come on that Saturday when the museum will be open from 10 am to 4 pm and support this organisation which provides much care and assistance in the village.

We hope that Purton Guide Dogs will provide a display covering their hard work during the months of June and July (this is subject to confirmation). We will then turn our thoughts to the centenary of World War I, which will be sympathetically covered by our museum.

The museum can be opened during the winter closure by arrangement with the curator by telephoning 01793 770124.

JAN WALKER, Curator

Great War Project

Part 7. Steel, Gunboats & Ironclads

Last month we looked at the world politics of the early 20th century. What lay beneath that at the industrial and military level?

Industrialisation in the 19th century had made major changes to people's lives in much of Europe but it had also added to the engineering capabilities of those countries. Steel making in particular saw major advances with the Bessemer furnace process of the early to mid-1800s being replaced by the open hearth process enabling the manufacture, in vast quantities, of steel cable, steel rods, sheet steel and products from them such as high-pressure boilers and high-tensile strength steel for machinery which enabled much more powerful engines, gears and axles than were possible previously. These new products fed into railways as well as the military uses of more powerful guns and carriages, tanks and naval ships.

Naval ships built entirely from wood had been shown to be completely out of date in the face of advances in big gun technology. Armoured warships, or ironclads, were developed in the 1850s. They were steam-propelled and protected by iron or steel armour plates. France launched its first ironclad battleship, *Gloire*, in 1859. The Royal Navy started building two iron-hulled armoured frigates the same year and by 1861 had decided to construct an all-armoured battle fleet. The first naval clashes of the American Civil War (1862) showed that the ironclad was the way forward. By end of the 1890s new ships were increasingly constructed to a standard pattern and designated as battleships or armoured cruisers.

The Royal Navy's *HMS Dreadnought* (launched 1906), made such a strong impression on people's minds that similar battleships built afterwards were called "dreadnoughts", and earlier battleships became known as pre-dreadnoughts. Dreadnought's design had two revolutionary features: an "all-big-gun" armament scheme, with an unprecedented number of heavy-calibre guns, and steam turbine propulsion. The construction of these new warships renewed the naval arms race between the United Kingdom and Germany.

I briefly mentioned the Kiel Canal last month. It was widened for military purposes between 1907 and 1914 specifically to be able to take Dreadnought-sized battleships.

Railways had flourished across Europe from the 1820s. The military benefits were seen very quickly and rail transport was an important factor in many conflicts including:

- the movement of Prussian Troops in 1848 to put down a revolution;
- munitions movements by Britain in the Crimean War;
- massive troop movements by train in the American Civil War;
- and again in the Boer War.

From this, and with fear of a war on two fronts, Kaiser Wilhelm II commissioned Count Alfred von Schlieffen to prepare a military plan for a potential attack on France. Schlieffen's Plan was heavily dependent on railway logistics: to win a

two-front war needed a quick defeat of France in the west – 39 days were allowed for the fall of Paris and 42 for the capitulation of France. Then the attack would go east: Germany intended turn on Russia, before they were ready.

The Schlieffen Plan (1906) reversed the ideas of his predecessor, Helmuth von Moltke the Elder, whose experiences in the Franco-Prussian War had made him doubt that a swift success could be achieved. But the Japanese victory in the 1904-05 Russo-Japanese War had discredited the Russian military, and the Schlieffen Plan took Russian failure into account. A rapid German mobilization, with disregard for the neutrality of Luxembourg, Belgium and the Netherlands and an overwhelming sweep of the powerful German right wing southwest through Belgium towards France was the key.

Of course railway technologies took other guises in this period. In 1901 the Wuppertal Suspension Railway (*Schwebebahn*) was opened as the earliest electric elevated railway in the world with hanging cars and it is a unique system still moving 25 million passengers a year. The suspension railway runs 23 kilometres at about 12 metres above the River Wupper and was a German realisation of a British horse drawn plan of Robinson Palmer (1824). It was seen as a major advance in railway technology of its day, but was never repeated. Having travelled on it, I can recommend the experience especially if you can book into the *Kaiserwagen* in which Wilhelm II travelled on its opening run.

We saw in Part 5 (December 2013 issue) that the protracted conflict of the 2nd Boer War had caused much concern in Britain – the greatest empire the world had ever known had struggled against a militia of farmers. Between 1906 and 1912, the British Secretary of State for War, Richard Burdon Haldane set in place a series of far-ranging reforms of the British army. An Expeditionary Force was formed, specifically prepared and trained for deployment in a major war. This force would have a permanent peacetime organisation and a full complement of supporting troops. Reserve forces were restructured and expanded; the Special Reserve, Volunteer Force and Yeomanry were reorganised into a new Territorial Force for home defence. An Officer Training Corps was established and military strategy was unified across the Empire and Dominions.

Major advances were also being made in the chemical industry, including the development in Germany of the Haber-Bosch process for the manufacture of ammonia, useful peacefully in the manufacture of fertilisers (ammonium nitrate/sulphate) but also as a precursor to nitric acid and its uses in pigments, inks, dyes ... and military explosives.

But if engineering had thought itself supreme, it had another think coming when the *RMS Titanic* sank on her maiden voyage on 15 April 1912. So well designed, so unsinkable that it didn't need more than a few lifeboats.

The arms race and its new-fangled weaponry had brought concerns to the fore in terms of how mechanised warfare would be conducted. In 1863, during the American Civil War (1861-65), President Abraham Lincoln signed into force the Lieber Code dictating how soldiers of the Union Army should behave in wartime and covering the treatment of spies, deserters and prisoners of war. It was one of the building blocks of the Hague Conventions of 1899 and 1907. The 1899 Hague

Conference defined the conditions of a state of war and the practice of war on land and sea. It also prohibited the use of asphyxiating (poison) gases, expanding bullets (dumdums) and the discharge of projectiles or explosives from balloons. It also set up a Permanent Court of Arbitration.

U.S. President Theodore Roosevelt proposed a new conference at The Hague in 1907, which was officially convened by Tsar Nicholas II of Russia and attended by representatives of 44 states. Agreements were passed concerning:

- the rights and duties of neutral powers and of participants in war on land and sea;
- the laying of automatic submarine contact mines;
- the status of enemy merchant ships;
- bombardment by naval forces in wartime;
- renewal of the declaration prohibiting the discharge of projectiles from balloons;
- acceptance of the principle of compulsory arbitration;
- recommendation that another conference be summoned in eight years, i.e. 1915; this did not happen because of the outbreak of World War I, but it influenced the creation of the more highly organized League of Nations after the war.

The Conference did not reaffirm the declarations prohibiting poison gas and expanding bullets.

RICK DIXON

Spring Course

The 1950s and After: 1950 - 1964

A series of six weekly talks organized by the Purton Historical Society

Venue: Silver Threads Hall, Purton.
Speaker: Mr P. Booy B.ed Hist. Hons.
Course Fees: £22 on the night, £20 if booked previously.
Further Information: Inez Gale, 770138, or Paul Booy, 770755

26 February: 7.30 pm: Into the 1950s; Rationing; The End of Empire

5 March: 7.30 pm: National Service; Crime and Punishment; Dates with the Hangman

12 March: 7.30 pm: The Korean War; Brain Washing and Treason

19 March: 7.30 pm: The Cold War; Films; Television for Everyman

26 March: 7.30 pm: "You have never had it so Good"; Harold Macmillan; The English Housewife

2 April: 7.30 pm: The Profumo Scandal; Was Stephen Ward Murdered?; Summing up

Perhaps it is in social matters life has changed most. Our session on The English Housewife, Crime and Punishment and Television would seem to confirm this.

Right: a Swindon girl of the 1950s (Diana Dors)



Purton & District Darts League



January's inclement weather fortunately has not really affected any matches.

The Charity Darts which took place in December gave way to some excellent darts and it was very well attended - to which we as the Committee are indebted to you players. After some well-fought games The Green Army, consisting of Jim MacDonald and Mark Northall were victors, with the Throw Men consisting of Justin Frost and Mark Cutter a close second. Both teams were very generous in donating their prize money to The Prospect Charity, together with the Darts Committee donation, the total sent was £200.

Thank you to everyone who donated prizes and bought raffle tickets as this all contributed to the overall donation. We would also like to thank The Red House for hosting a very enjoyable evening of fun and darts.

Darts Fees are due and each team needs to pay £60 with additional £10 per team for competition fees. These need paying NOW please to me urgently.

At the time of writing the Leatherbarrow Competition was not held so will update this in the next issue.

Thank you all again for your continued support and may the great games continue in 2014.

LISA MARTIN, Secretary, 0776 499 4933

Purton Bowls Club



I hope you are all feeling good after the New Year festivities. Personally I still feel a bit like our Bowls Green, 6 tons of top dressing piled on top in the closed season must have been very uncomfortable. The Green is looked after by members of the Bowls Club and they do an amazing job to keep it in such great condition. The 6 tons of top dressing was absorbed in no time at all and the Green looks lovely once again, hopefully I too will have recovered by the end of February!

The closed season is a very important time and there is a lot of work to do on the Green, even when most of us have stopped bothering about our grass, the team are busy preparing for the new season. We have to use very specialised equipment for drilling and aeration, along with labour intensive care and knowledge. Perhaps some of you could learn a thing or two about lawn care by coming along and helping when you can.

We will have had a committee meeting by the time you read this, and will be implementing our coaching evenings and publishing times and days when you will be able to come along. Further information can be had by ringing either myself, Peter Berry on 778119 or Alison Fail (our Secretary) on 770015. We have been asked to run a coaching session with a County Coach for 21 June, which will provide new and experienced bowlers with the chance to have their play analysed by a professional. That should be fun!

PETER BERRY

Think about it ...

Logic merely enables one to be wrong with authority.

Dr Who

Did you make any New Year resolutions last month. If so they are bound to include get fitter, healthier and slimmer!

If I am correct then look no further! Purton Tennis Club is the place to be. It is our membership time and Mary Turner our membership secretary will be happy to discuss the various options with you on 07779 580893.

Phil Kerley, our chief coach, has also issued the coaching opportunities for 2014 and he will be very happy to talk through these with you:

Monday

- 4.00 - 5.00 Mini Red 5 (Ages 4-6)
- 4.00 - 5.00 Mini Red 10 (Ages 6-8)
- 5.00 - 6.00 Mini Orange 10 (Ages 8-9 just moved up to Mini Orange) - NEW
- 5.00 - 6.00 Mini Orange 15 Ages 8-9)

Wednesday

- 1.00 - 2.00 Adult Improvers
- 3.00 - 3.30 Tots (Ages 2-4) - NEW
- 3.45 - 4.45 Mini Red 5 (Ages 4-6)
- 3.45 - 4.45 Mini Red 10 (Ages 6-8)
- 4.45 - 5.45 Juniors (Ages 10+)
- 6.00 - 7.00 Cardio Tennis (Beginners to Experts it does not matter - get fit for 2014)

Thursday

- 3.15 - 4.15 St Mary's After School Club
- 4.30 - 5.30 Mini Red 5 (Ages 4-6)
- 4.30 - 5.30 Mini Orange/Green/Yellow (Ages 8-11)

Friday

- 3.15 - 4.15 Lydiard Millicent After School Club
- 3.30 - 4.30 Mini Red 5 (Ages 4-6) - NEW at the Club

Saturday

- 10 - 11.00 Fun tennis with Mat; 10 and under.

Week commencing 27 January we will be having a "Bring a Friend". Please contact Phil on 07711 852222.

So please don't wait, the road to fitness starts here!

STEPH BROWN, Secretary

Purton Cricket Club purton.play-cricket.com

Practice for senior players starts at Prior Park School sports hall on Tuesday, 4 February. The sessions last from 7 pm to 8.30 pm.



From the Archives

As Purton CC enters 2014 and its 194th anniversary year and with six years to go before the club's 200th anniversary celebrations the archive item reflects on an event six years before cricket started in Purton but which has a strong link to the village.

In the early days of organised cricket Thomas Lord bought land in London in order to convert his purchase into a cricket ground. The first Lord's ground was used from 1787-1811, the second one from 1811-1814 and the present Lord's was baptised on 22 June 1814 when the MCC played a one day match v Hertfordshire.

Playing for the MCC was a well known 29 year old England cricketer named Edward Hayward Budd. He performed well in the match taking 4 wickets and scoring 36 runs in an easy victory for his side by an innings and 27 runs. Six years

later, in 1820, the vicar of Purton, the Reverend Prower, was the leader of a group of local gentlefolk who formed 'The Purton Club' more often known in the early nineteenth century as 'The Purton'. In 1825, Mr Budd, aged 40 retired from his position in the War Office, moved to Wroughton and soon became a member of 'The Purton' playing until 1852 when, at the age of 67, he retired from playing. He lived in Wroughton until his death in 1875, aged 90.

JOE GARDNER

The Cricklade Band

I thought this might be a good time to introduce myself as the band's new secretary.

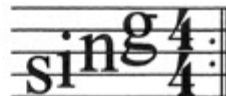
The Performance Band and our thriving BandAcademy were all geared-up as usual for a busy festive season. Our December diary had about 15 events between the 6th and Christmas morning when we were out and about playing all the familiar carols and Christmas music. We toured the streets of Cricklade, Purton, Ashton Keynes and Latton and also performed our 'Christmas Present' show in Cricklade.

Best wishes from me and everyone in The Cricklade Band.

MANDY ROBERTS, *Secretary*

Sing for Four Community Choir

CONGRATULATIONS are due to the choir for presenting their "Joy of Christmas" concert in Cricklade Town Hall on Sunday 8 December. As usual, every seat was taken and we thank our audience for their continued support.



Mary New, Musical Director of the choir gave us a lively and exciting programme with traditional and contemporary carols and community singing. Guest artistes included our magnificent young soprano, Erin Hughes, flautist Jennifer Bamford, the Purton Hand-bell ringers and the Carollers' Brass group. Robert Crow was the compère par excellence and everything expertly accompanied by Christine Williams. What a team!

Our thanks also to Angela Kemble for doing all the hard work in organising and running the very successful raffle which raised £295. The proceeds from the event have been shared between Choir funds, the Jenner Hall and Open Door. We were treated to a magnificent floral display by Margaret Cripps and refreshments organised by Naomi and Wayne Allbright.

The Choir welcomes new members at all times and is currently well supported by members from Cricklade, Purton, Swindon and Cirencester. We offer a wide ranging repertoire and 5* camaraderie.

Enquiries to Mary New 01793 70630.

Swindon Choral Society

The Society always welcomes new new singers: Sopranos, Altos but especially more **Tenors** and **Basses**. If you haven't sung in choirs before, why not join us for a term to try us out! Rehearsals are held at 7.30 pm on Thursdays at Freshbrook Ecumenical Church.



For more information visit www.swindonchoral.org.uk

KATH DANSWAN

Purton Rainbows, Brownies & Guides



The last week of term in December was of course dedicated to Christmas. Rainbows held a party which they also combined with a "Pot of Gold" meeting to say goodbye to Amelie, Amelia, Kate, Katie and Jessica. 1st Purton Brownies' had a traditional Christmas party with games, music and food too and the Guides got together with Cricklade Guides for a joint party.

2nd Purton Brownies had a double celebration; as well as Christmas festivities which included making foam Christmas tree decorations and chocolate logs, they celebrated the 18th birthday of Lauren, their Young Leader. Much to Lauren's surprise, they had put up balloons and banners to mark the occasion. Lauren has helped at the unit for four years and the Brownies enjoyed celebrating her birthday – especially the cake which their new helper Deborah made.

During the Christmas break, Kelly and Lauren from 2nd Purton Brownies took gifts to Purton Lunch Club – this time a pot of bulbs in a Rudolph-decorated bag.



As mentioned in January's magazine, 2014 is a very special year for the Brownie age group as they celebrate The Big Brownie Birthday – 100 years of Brownies. 2nd Purton Brownies held a party early in January to celebrate both The Big Brownie Birthday and New Year.

Of course, they had to have another cake! Party games and food were enjoyed by all, including their five new recruits.

For enquiries about joining one of our units (girls or adult volunteers), please contact Braydon District Commissioner Jo Begg by phone on 874066 or by email at braydondc@wncounty.org.uk. You can also register interest at www.girlguiding.org.uk/interested

Good news – the Beavers are back!

We are delighted to inform you that our youngest scouting section – the Beavers will be reopening in February 2014! We have a new team of adults from Purton and Lydiard who have kindly volunteered to give all that is required to becoming 'Beaver leaders' – Thank you team! They have been meeting regularly since November and are in the process of initial training and planning for their opening term.

They will meet at Lydiard Millicent Primary School – Monday nights 6.15 - 7.15 pm.

The Beavers' activities are based around making things, outdoor activities, singing, playing games, going out on visits, investigating nature, listening to stories, learning how to be safe and most importantly, making new friends.

The age range is from 6-8yrs approx and it is open to boys and girls. If you live in the Parishes of Purton and Lydiard, then your child could join Beavers!

To find out more about joining, please email us via our website at www.plscouts.org.uk/beavers/about_us or telephone Jan Fisher, Assistant Group Scout Leader on 771216.



This academic year, we launched our new termly newsletters. They are designed to give a varied overview of what we've been up to at Bradon Forest during each term and are a great way to get a feel for our school, especially if you are new to the area! Catch up on all the latest news at:

<http://bradonforest.org.uk/News/Newsletters/>

Our GCSE students have been working hard, preparing for life after Bradon Forest:

Mock Interviews

Our annual Mock Interview programme enables all Year 11 students to practice their interview skills ahead of applying for college, vocational courses or part time work. Each slot is 10 minutes long and students then have feedback on their strengths and areas for improvement. The team of 18 interviewers range from school governors to college lecturers and even CEOs of local businesses. Students spend the day in smart interview wear which certainly helps with the mindset needed and adds to the whole experience.

Jade Hedges, 11T, said: *"Although I was nervous at first, I felt good as the interview went on. My confidence has grown as a result of this experience and I know what to focus on when I'm interviewed for real!"*

Mock Exams

Year 11: 9-12 December Year 10: 20-24 January

Mock exams aim to replicate the conditions of formal written GCSE examinations.

The purpose is to give students valuable experience in such conditions to help cope and plan for final examinations. As GCSE assessments move from the "modular" method (examinations which are spread through the academic calendar), to "linear" (all or most examinations at the end of Year 11), this practice becomes much more relevant. When results are published it is also an opportunity for both students and staff to focus on, or revisit



weak areas and indeed celebrate success too. Year 11s received their mock results on Thursday 9 January, when some also received actual GCSE results for English and Maths taken in November.

Year 10 Work Experience

Our Year 10 students are finalising their places for Work Experience Week next month. It is a great opportunity for them to get a taste for the work place, and also an insight into possible careers for the future. Reports to follow in March.

A MORRISON, Headteacher

Purton & District Gardeners' Guild



As there was no December meeting on which to report in this month's magazine, I would just like to remind members that Roger Umpelby will be joining us on Tuesday 25 February to speak on the subject of 'War in the Vegetable Garden - dealing with Pests and Diseases'.

The competition will be 'A Winter Scene'

The meeting will be held as usual at 7.30 pm in Silver Threads Hall. Visitors and new members will be guaranteed a warm welcome.

MARGARET GOODALL (Secretary) & LINDA ROBERTS (Chairperson)

Swindon Foggy's

We hold friendly, informal drop-in support meetings where partners, loved ones and carers are welcome and encouraged to attend too. We are dedicated to providing support, raising awareness and promoting positivity, for "invisible conditions", primarily for:

- Arthritis and Rheumatic Conditions
- Chronic Fatigue Syndrome and M.E.
- Fibromyalgia
- Giant Cell Arteritis
- Irritable Bowel Syndrome
- Polymyalgia Rheumatica and Giant Cell Arteritis
- Seasonal Affective Disorder
- Trigeminal Neuralgia

Please contact our helpline for further information: 0844 887 2377 Ann

Additional **North Swindon** meeting:
Third Monday of the month, 12 - 2pm,
starting Monday 17 February 2014 at:
St Andrew's Methodist Church
Moredon Road,
Swindon SN25 3DF

Our **East Swindon** meeting is still popular:
First Wednesday of the month 12 - 2pm:
Liden Community Centre
Barrington Close, Liden,
Swindon SN3 6HF

Group founder Deb Cooke deb.cooke@butyoudontlooksick.co.uk
www.butyoudontlooksick.co.uk

HMRC No. XT36442

Purton & Green Gable Surgery Group for Patients - G4P



The Purton Surgery will be hosting a talk on Orthopaedics on Thursday 20 March from 7.30 to 9 pm.

The guest speakers are Neil Orpen (Orthopaedic Consultant) and Vincent Sejournant (Osteopath).

Although this is a free event, tickets are required due to limited seating. Please contact Purton Surgery, tel 01793 770207, for tickets

SHEILA FOWLER, Secretary, G4P

Put Down

I never forget a face, but in your case I'll be glad to make an exception.

Groucho Marx

PURTON PLACARD

Groups are invited to submit to the Editor details of forthcoming events in, for and on behalf of our community.

Purton Age Concern **JUMBLE SALE**

at the Village Hall
on Saturday 8 February
at 2 pm.

Lots of bargains, nearly new,
books, toys, bric a brac, clothes
Jumble can be left at the hall
between 12 noon and 1 pm.

Christingle

at St Mary's Church Purton
Sunday 2 February
Tea & Cake at 4 pm

followed by the service at 5 pm



The BIG Promise

'Thanksgiving for Marriage' service
Saturday 8 February, 4.45 pm

at St Mary's Church, Purton
All couples who want to reaffirm their
wedding vows

and anyone who wants to show their
support for marriage are welcome.

Tel: 770826 and 770627

St Mary's Church, Purton

Curry Evening

Curries from Southeast Asia
and a Quiz

Saturday 1 February

7.30 pm at Silver Threads Hall
Purton

Tickets (limited number): £12.50
Bar

Breast Cancer Care **Charity Fashion Show**

Purchases can be taken home the
same night!

At Wootton Bassett Memorial Hall
Monday 17 March 2014

Doors open at 7 pm for a 7.30 start
Tickets £5 each

Tickets: call Kirsty on 770094

Brody Anderson & Georgia Clifford
present

World Challenge Disco

Norway 2014

at Purton Village Hall
Saturday 1 March, 7.30 - 11.30 pm
Bar & Nibbles

£6 entry

Tickets:

Julie Clifford 770168

Tracy Anderson 771182

Purton Evening W.I.

Soup & Sweet

Silver Threads Hall
on Monday, 3 February
from 12.30 - 2 pm.

Cost £5 to include
homemade soup, sweet and
tea/coffee.

There will be a raffle.

Purton Age Concern
ANNUAL AUCTION

at the Village Hall
on Saturday 1 March
Items for sale can be brought
to the Hall from 9.30 am to 11.30 am
Viewing from 12 noon to 1 pm.

Sale starts at 1 pm.

AUCTIONEER
Mr Roderick Wightman

St Mary's Church
will be holding a
Murder Mystery Evening

on **Saturday 22 March**
in conjunction with **PADS**
in **Silver Threads Hall** 7 pm

Tickets £12.50
to include a two-course meal
Bar

Tel: Sandra 770157, Sheila 770970,
Val 771201, Jane 772422

Group for Patients
Purton and Green Gable Surgery

Talk on

Orthopaedics

Thursday 20 March
7.30 - 9 pm at Purton Surgery

Speakers:

**Neil Orpen - Orthopaedic
Consultant**

Vincent Sejourant - Osteopath

Although this is a free event,
tickets are required due to limited
seating.

Please contact Purton Surgery,
tel 01793 770207, for tickets

World Challenge
Family Race Night

Saturday 22 March
at the Village Hall

5 - 9 pm

Ticket prices to include Supper
£4 Adults : £2 under 12s
Call Dee on 771435, or
Lorraine on 772357

Purton Amateur Dramatic Society

It seems very early to be writing this but by January we will be thinking about Pantomime. This year is "Trouble in Fairyland" (by Tony Richardson) at The Village Hall on Thursday to Saturday, 13 to 15 February.

Ticket Prices: £7.50 adults,
£6 Concessions,
£4 Children,

from Best One & In-Touch Services or
771890 or 772581.

There will be a bar at evening performances.



Great British Fish & Chip Supper

Want to eat Fish and Chips, while raising money for charity? Hold a fish and chip supper on Friday 16 May whilst raising awareness of spinal cord injury and supporting Spinal Injuries Association's vital services.



You can hold a fish and chip supper in your own home, at work or hold a larger supper at your local community centre.

SIA will provide a fundraising pack containing hints and tips, recipes, invitations and donation envelopes. By inviting 8 friends and asking them to donate an additional £5 means you will raise at least £40 from your supper but we will also give you additional fundraising ideas to raise even more money for SIA.

In 2014 SIA is celebrating its 40th anniversary and so we want to make the batter matter and raise £25,000 from everyone holding suppers. Last year we raised £12,500 from the suppers.

The money raised from the suppers will help the Spinal Injuries Association offer support to individuals who become paralysed and their families, from the moment a spinal injury occurs, and for the rest of their lives by providing services and publications which enable and encourage paralysed people to rebuild lives after spinal cord injury.

Every year in the UK over 1,000 people experience a spinal cord injury and there are an estimated 40,000 spinal cord injured people in the UK alone.

Community Fundraising Manager, Elizabeth Wright, says, "The Fish and Chip Supper is a wonderful opportunity for a great evening with friends and family. We are also encouraging people who work to hold a Fish and Chip Lunch in their work places to raise even more funds. You may be even a local community group wanting to run a fun evening with your group."

For more information or request a fundraising pack call Elizabeth Wright on 0845 071 4350 or email fundraising@siafishandchips.co.uk or visit www.siafishandchips.co.uk.



Some Things to Think About

A good battle plan that you act on today can be better than a perfect one tomorrow.

General George Patton

EXPERT - A person who is never in doubt but who is often in error. Anonymous

Purton Evening WI purtonevewi.wordpress.com



The meeting of 18 December was such fun, with most members dressed up in 60s style and looking so attractive. The years seemed to fall away and after an excellent dinner, provided and served by Hospitality Services, we sang along and did puzzles and all-in-all had a thoroughly good time.

Other events have happened over the Christmas break, with trips to the pantomime, an excellent lunch at Cricklade House, and get-togethers of the jolliest kind.

As was reported before: due to changes in catering, our original WI china is being sold off to members at £1 per cup and saucer, and 50p for matching plate. A few still remain but they are being snapped up, with the comment that it is so nice now and then to drink from fine china, no matter how cheery and useful are our kitchen mugs. A chance not to be missed because you are unlikely to be able to purchase good china at such a low price again. And can't you just hear mother-in-law cooing with pleasure – "Oh, I do like to drink out of a real china cup ...". You must admit that it would be well worth the £1, or even £1.50 with the plate!

Our speaker for 19 February will be Yvonne Lockhart and her subject will be, "Brush away those winter blues". The competition is entitled "My idea of relaxation", and social time (for me, anyway) follows so appropriately – it is to be "Wine and nibbles". If our members and visitors are on that same wavelength, we should have a delightful evening!

You can rely on the WI to bring out the best in all of us and this will be a good opportunity to discuss volunteering for the new Committee in time for the AGM in March. We have been so lucky in the past with super Presidents and Committees and the 2014 group will have a fine time in trying to compete. Come and share your ideas!

I look forward to the pleasure of your company on the 19th.

Don't forget our Soup 'n Sweet event at the Silver Threads Hall on Monday, 3 February from 12.30 - 2 pm. Cost £5 to include homemade soup, sweet and tea/coffee. There will be a raffle.

CONSTANCE REED, tel: 771571

Have your Purton Magazine delivered FREE

Instead of remembering to buy your Magazine every month you can have it delivered free to your door.

For a £6 annual subscription we will deliver FREE within our area. Postal deliveries cost £15 per year. You can join our scheme at any time during the year with the price adjusted pro rata.

For further information contact [John Creasey](#).

Wise Words

To change and change for the better are two different things.

German Proverb

Jump for Justice

Have you been thinking about the Cricklade abseil for Christian Aid, in Cricklade Church on Sunday 11 May, the first day of Christian Aid Week 2014.

This will be an indoor free-fall abseil, down the inside of the tower and into the chancel of the church! You need to have good physical fitness, be able to climb 7 flights of stairs in one go, be reasonably flexible, no fear of heights and be comfortable in small spaces. There will be all sorts of excitements going on, at St Sampson's, with food and fun available throughout the day.

There are limited places available, so get in touch soon!

If you are 11 years or over, you pay £15 to register and agree to fundraise a minimum target of £200. This money will fund life-changing projects around the world where Christian Aid works in over 50 countries, responding to disasters; developing long-term partnerships and campaigning for a fair and just world!

We would love to hear from anyone who would like to know more. Maybe we can help with ideas for raising sponsorship; maybe we can find a group of friends to help you achieve this target. Remember, as well as enjoying the day and the jump of a life-time, we are raising funds for a great cause.

So please do save the date and think about whether you want to jump for justice in 2014.



More details from Mary Hodges (770505) or Sandra Horsnall (770157). To register email [Katrine Musgrave](mailto:Katrine.Musgrave@christian-aid.org) on kmusgrave@christian-aid.org.

St Sampson's Church, Cricklade

Purton Magazine