

# Purton *Magazine*

November 2013

## PURTON ARTISTS 32ND EXHIBITION

TO BE HELD  
AT

THE VILLAGE HALL  
LOWER SQUARE, PURTON

NOVEMBER

FRI 8th 6pm-8.30pm

SAT 9th 10am-4pm

SUN 10th 10am-4pm

Light Refreshments available



See [page 34](#) for more details

50p

## PURTON CONTACTS



Wiltshire Councillor	Jacqui Lay	770704
Doctors	Purton Surgery	770207
Dental Surgeries	Church Street	770532
	Philip Cooke	771022
Junior Church	Mary Hodges	770505
Library	Librarians	770870
	<i>(Mondays 2 - 5pm; Tuesdays 2 - 7pm; Wednesdays 10am - 5pm; Fridays 2 - 5pm)</i>	
Museum	Curator: Jan Walker	770124
	<i>(Wednesdays 2 - 5pm; Saturdays 10am - 1pm)</i>	
Police / Fire / Ambulance	Emergency number	999
Police	Non-emergency Number	101
Post Office	Susan Budd	770346
Purton Age Concern	Tony Price	770696
Minibus	Maurice Card	770338
Purton Helping Hand	Pauline Ward	770251
Purton Parish Council	Shirley Bevington	771066
Veterinary Surgery	Purton Veterinary Group	771869
Wiltshire Good Neighbours	Ellen Blacker	07557 110414

### **Schools and Play Groups:**

Bradon Forest Comprehensive	Secretary	770570
Playclose Playgroup	Dawn Phillips	778141 or 07759 583566
Purton Under 5's Community Playgroup	Fionna Griffiths	771723
St Mary's Primary	Secretary	770239

### **CHURCH OF ENGLAND – PARISH CHURCH OF ST MARY**

<i>Vicar:</i>	<i>Revd Ian Tweedie-Smith (Priest-in-charge), tel 770077 (for emergencies only, 773031) email: <a href="mailto:vicarage@stmaryspurton.org.uk">vicarage@stmaryspurton.org.uk</a></i>	
<i>Curate:</i>	<i>Revd Judith Wells, tel 770627, email <a href="mailto:curate@stmaryspurton.org.uk">curate@stmaryspurton.org.uk</a></i>	
<i>Wardens:</i>	<i>David Nettleton, tel 772298 Sandra Horsnall, tel 770157</i>	
<i>Administrator:</i>	<i>Rosie Harris, tel 773035, email <a href="mailto:administrator@stmaryspurton.org.uk">administrator@stmaryspurton.org.uk</a></i>	
<i>Web site:</i>	<i><a href="http://www.communitagate.co.uk/wilts/stmaryspurton">www.communitagate.co.uk/wilts/stmaryspurton</a></i>	
<i>Services:</i>	<i>See Diary Page in this magazine</i>	

### **METHODIST CHURCHES**

<i>Minister</i>	<i>Rev David Perkins tel 853197 1 Garraways, Woodshaw, Royal Wootton Bassett SN4 8LT</i>	
<i>Services:</i>	<i>PURTON See Diary Page in this magazine BRAYDON Sundays 6.00 pm Evening Worship</i>	

### **CATHOLIC CHURCH**

#### **CHURCH OF THE SACRED HEART, ROYAL WOOTTON BASSETT**

<i>Parish Deacon</i>	<i>Reverend Terry Aspell tel 325681 Church of the Sacred Heart, High Street, Royal Wootton Bassett</i>	
<i>Services:</i>	<i>Holy Days 7.30 pm Sundays 10.30 am Mass For times of weekday services please see Church notice board</i>	

#### **ST MARY'S CHURCH, CRICKLADE**

<i>Priest</i>	<i>Father Philip Beisly tel 01285 712586 St Mary's Church, High Street, Cricklade</i>	
<i>Holy Days</i>	<i>7.00 pm Mass</i>	<i>Sundays 9.30 am Mass</i>

## From The Editors

For any reader who may be at a loose end, especially on the first couple of weekends in November, this edition of your magazine has details of lots of local events to keep you engaged, interested and occupied.

On Saturday 2 November, for example, the Shoeboxes start to be filled at 10 am in the Methodist church – see [page 13](#). Doubtless an appetite could easily be worked up filling and chatting, so the Food Festival, starting at 12 noon in the Village Hall could be just the answer. Reading the article on [page 32](#) it seems that, while sampling some of the tempting treats available, visitors should also be able to sort out their Christmas menus as well as find a few presents that might include a new local recipe book. Then, perhaps after a siesta or similar, the day could be rounded off with a visit to Lydiard Park and the annual Scouts Firework and Bonfire Spectacular from 6 pm with more information on [page 15](#).

The day after seems equally interesting with a “geocaching” event between 10 am and 3 pm at the Gateway Centre in the Cotswold Water Park – it’s free and more details can be found on [page 36](#). Then the weekend can be rounded off with the All Souls’ Service at St Mary’s church at 6 pm where all those who have died are remembered – see [page 24](#).

Then the following weekend is the 32<sup>nd</sup> exhibition by Purton Artists spread over 3 days in the Village Hall as detailed on the [front cover](#) and on [page 34](#). It has always been an amazing show of local creative talent and another very reliable source of unique Christmas presents. Also on Sunday 10 November, would readers please note on [page 33](#) that the High Street will be closed between the Lower Square and Long Acre between 2.15 and 3.15 pm (and marshalled by volunteers) for the annual Remembrance Service – your patience and understanding would be appreciated.

In addition to the many and varied regular events happening in Purton in November, this issue also contains information about local housing matters on [page 16](#) and 15 November is the deadline for feedback on the Parish Plan – more details are on [page 13](#). Local entertainment events in November include a wine tasting evening (see [page 34](#)) and, on the [same page](#), the Logic of Nothing, a Heath Robinson/Rube Goldberg inspired piece of non-verbal Circus-Theatre. Sounds fun!

**1<sup>st</sup>**

annual sports award  
evening at  
Bradon Forest school  
– see [page 14](#)

**2 years**

increase in average  
life expectancy  
in the last 10 years  
– see [page 12](#)

**£1,445**

raised by  
this year’s Shoebox  
fundraising day  
– see [page 21](#)

## CONTENTS

[Age Concern](#)  
[Bradon Forest School News](#)  
[Bradon Forest Theatre](#)  
[Carnival News](#)  
[Church Floodlighting](#)  
[Coffee & Chat](#)  
[Community Café](#)  
[Cotswold Water Park](#)  
[Cricket Club](#)  
[Cricklade Band](#)  
[Cricklade Country Market](#)  
[Darts League](#)  
[Diary Pages](#)  
[Evening WI](#)  
[From the Trustees](#)  
[Gardeners' Guild](#)  
[Great War Project](#)  
[Group 4 Patients](#)  
[Guide Dogs](#)  
[Harvest Flowers](#)  
[Heroes & Villains](#)  
[Historical Society](#)  
[Jubilee Gardens](#)  
[Library Hours](#)  
[Library Visitor!](#)  
[Luncheon Club](#)  
[N Wilts Conservatives](#)

[Obituary Contacts](#)  
[On the Lighter Side](#)  
[Parish Council News](#)  
[Parish Plan](#)  
[Prayer for Purton](#)  
[Purton Artists](#)  
[Purton FC](#)  
[Purton Placard](#)  
[Purton Postbag - Letters](#)  
[Purton Profferings](#)  
[Rainbows, Brownies & Guides](#)  
[RBL Purton](#)  
[Scouts Christmas Post](#)  
[Scouts Fireworks Spectacular](#)  
[Sheep are coming](#)  
[Shoobox News](#)  
[St Mary's Church Exhibition](#)  
[Tennis Club](#)  
[Transforming Purton](#)  
[What's On?](#)  
[Wine Tasting](#)  
[Wessex Male Choir](#)  
[What's On?](#)  
[Wiltshire Good Neighbours](#)  
[World's Biggest Coffee Morning](#)  
[Your Magazine Delivered Free!](#)

The logo for Purton Magazine, featuring the word 'Purton' in a large, stylized serif font with 'Magazine' written in a smaller, cursive font underneath it.

© 2004 - 2013

Magazine Committee

Avril Ainscough, Barbara Compton, John Creasey, Helen Dixon,  
Rick Dixon, Sheila Fowler, Nigel Manfield, Francis Sheppard

Typeset & Printed by: **In Touch Services**

**Advertising enquiries and copy for contributions**

*by 10<sup>th</sup> of each month, please*

to: Purton Magazine, c/o In Touch Services, 115 Pavenhill, Purton SN5 4DB  
tel & fax: 01793 772954 email: [mail@purtonmagazine.co.uk](mailto:mail@purtonmagazine.co.uk)

**Distribution enquiries only:**

[John Creasey](#)

*Other enquiries and comments for the committee to:*  
The Secretary, 45 Ringsbury Close, Purton SN5 4DF

**Also on line at [www.purtonmagazine.co.uk](http://www.purtonmagazine.co.uk)**

---

## Parish Council News



**Remembrance Sunday Road Closure, 10 November 2013** – Purton High Street will be closed from the Lower Square to the cross roads at Long Acre/Reids Piece at 2.15 pm until 3.15 pm. The road closure will be marshalled by local volunteers as sadly the police will not be in attendance due to a change in Wiltshire Police policy. It is appreciated that road closures can be very annoying, but your patience during this particular closure would be greatly appreciated.

**Phonebox Outside Purton Institute Building** – You may have noticed when you walk in front of the Library that the phone box is having a lick of paint. This is the second stage of a pilot scheme for the phone box. The first phase was to adopt the phone box and apply for Listed Building Consent to refurbish it, in which we were successful. Work on the second stage has started, with the broken window panes being replaced and the box re-painted. The third stage will see equipment being installed for free local phone calls, Wi-Fi within 100 metres of the phone box, *Bluetooth* and a webcam which will show views towards the Best One and Station Road. The phone will have a screen where you can view adverts for local events and *Bluetooth* can also be used to advertise events in the village. If you would like to advertise through this means then please contact the Parish Council office.

**Pedestrian Crossing** – We are very pleased to report that a new pedestrian crossing is going to be installed in Purton High Street close to the entrance to Willis Way and the old Scout Hall. The work should be carried out in this financial year; that is before 31 March 2014. The Parish Council has been working to achieve this since the first pedestrian crossing was installed near the Silver Threads Hall a few years ago. We hope this will assist many people of all ages, in particular given the location of the Doctors Surgery and the schools. It is inevitable that traffic will increase through the village over the coming years and the pedestrian crossings will serve as not only as safer crossing points but also a means of slowing traffic down.

**Internet Fraud** – If you receive emails asking for money or that seem suspicious there is a new central agency that deals with Internet fraud go to [www.actionfraud.police.uk](http://www.actionfraud.police.uk) or phone 0300 123 2040.

**Plants Stolen** – We are disappointed to report that plants have been stolen from outside of the Ground staff's workshop. These plants were going to be stored over winter and used again next year in the planters, in particular a very pretty fuchsia has been taken. Given that we are increasing the number of planters around the village in an effort to improve the appearance of the village for the enjoyment of all, this is very disappointing. If the culprit reads this article and it pricks their conscious we would appreciate it if the plants could be returned.

**Wiltshire Council has approved the following Planning applications:**

N13/01565/FUL      3 *The Fox*, part single, part two-storey rear extension, front porch extension.

- N13/00653/FUL *Setter House, Church Street*, partial demolition and redevelopment of existing dwelling house to create a replacement 3-storey family house (including 2 bedrooms in the roof) with new garage and solar panels.
- N13/02072/FUL *9 Pavenhill*, dropped kerb onto highway for vehicle access and creation of hard standing.
- N13/02335/FUL *5 High Street*, Change of Use of Post Office to Residential.
- N13/02558/FUL *Stoke Cottage, Stoke Common Lane*, ground-mounted PV system.
- N13/01773/S73A *70C Pavenhill*, Variation of Condition 7 of N11/04074/FUL in relation to secure storage of garden tools

**Wiltshire Council has refused the following Planning application:**

- N13/01037/FUL *89 Reids Piece*, Rear single storey extension. This application was wrongly recorded as having been granted permission in last month's magazine. We would like to apologise to the applicant for any confusion this may have caused.

**Parish Councillors** – If you would like to help your community then becoming a Parish Councillor is a good way of doing this. We currently have five vacancies on the Council. If you would like to find out more about becoming a Councillor then please contact the Parish Council Office.

**How to contact the Parish Council:**

Telephone number 01793 771066 / Fax 772646

Email address: [clerk@purtonpc.eclipse.co.uk](mailto:clerk@purtonpc.eclipse.co.uk)

Website [www.purtonparishcouncil.gov.uk](http://www.purtonparishcouncil.gov.uk)

The Parish Council's letter box is on the wall adjacent to the side door (entrance door to the Parish Council offices) to the rear of the Library/Institute

On our new web site you can join up to receive regular updates which will keep you informed of ongoing Parish Council news such as planning updates. Please have a look at the site and join up.

**We Record ...**

*Wedding:*

28 September      Dean Cozens & Natasha Bramford  
                                         *at St Mary's Church*

*Funeral:*

11 September      Joyce Elizabeth Parks *at St Mary's Church*

*Interment of Ashes:*

5 October              Ruby Mary Keene *at St Mary's Church*

*To add your family announcements to this section contact Purton Magazine. Addresses on [page 4](#). We are happy to include births, marriages, deaths, special birthdays and anniversaries, exam successes ...*



---

## News from the Trustees

### **War Memorial and Village Centre**

We have started some precautions against antisocial behaviour by putting in more lights on the outside of the Millennium Hall and changing rooms that come on when anything or anybody comes into contact with their automatic sensor. Another part of the scheme is the Mosquito security device which is operated on a timer. How effective this will be, we will have to wait and see. The last part of this operation to be done will be putting the bollards in along the road at the side of the Red House Club to stop it being used as a race track.

The Bowls have finished for another season. I think they have had a successful, but most importantly, an enjoyable one. A special mention for Alison, their secretary, for her overall success in the Swindon & District Ladies competition, winning nearly all the trophies. Well done Alison.

It is the same for the Tennis Club. They also have had a very enjoyable and successful season. I think ten out of the twelve league teams have won promotion to a higher league, so congratulations to all you tennis players. Will you be playing in a winter league now that you have floodlights?

The football season is well and truly under way. I suppose you would say they are having a mixed start. The pitch looks in tip-top condition, so come on you lads – do the pitch justice. We are lucky with our clubs, the way they look after their premises. As I have said, the football pitch looks a picture as does the bowls green and let's not forget Paul and David who keep the rest of the Centre in excellent condition. We are so lucky to have facilities like this – the envy of many villages around us.

### **Village Hall Complex**

The windows have finally been done on the west side of the Institute. The scaffolding had to be up there longer because extra repairs were needed. If only we could have had new windows it would have been done and dusted inside a week, but that is planners for you. Look at the extra money it cost us compared with installing new ones.

The refurbishment of the gents' toilets seems to be well received. I think the ladies are a little bit jealous judging by the comments I have heard. Yes, they have been in to have a look – of course with a male going in first!

Could I thank all the kind contributors who helped with donations towards this project, especially Hills through the Landfill Tax. Without their help the project would not have got off the ground. Once again many thanks to you all.

Finally what a shame that, with autumn here, the hanging baskets round the Village Hall will have to come down – they have been such a picture all through the summer.

*TONY PRICE, Chair of Trustees*

### **Jubilee Gardens**

The road closure has been postponed until January. Students get great pleasure in welcoming visitors and showing them around the project. Please contact us if you'd like to arrange a visit: [www.jubileegardens.co.uk](http://www.jubileegardens.co.uk), or 771539.

---

## Purton & District Age Concern



It's getting towards that time of year again – Christmas! Are you entitled to one of our vouchers? For a couple, the man has to be sixty-five and over and the lady sixty and over. If the man, for example, is sixty-seven and his wife fifty-eight the gentleman only would get a voucher. If the lady was sixty-two and the man sixty-two, neither would get one. Single ladies sixty and over and single men sixty-five and over are entitled to them, so give our secretary Louise a ring on 772558 if you are not on your street wardens list already.

We had a very lengthy discussion about the impact the development at Ridgeway Farm, Moredon Bridge would have on our organisation – something I mentioned in last month's magazine. What was decided was that we would no longer cover the area east of the road that runs from Brimble Bridge to Common Platt (B4553). We shall review the situation in a few years' time but, as it is at the moment, it is two separate communities.

There are still vacancies for lunches at the Silver Threads Hall every Tuesday and Thursday. The minibus will pick you up if necessary. You would be in good company and it would make a break for you but, most importantly of all, you would have a lovely hot home cooked meal. If you want to find out more, give Pat Suddaby a ring on 771331 or I can always tell you more on 770696. More people are needed to go to keep this excellent service going.

The numbers at the T'ai Chi class at the Millennium Hall are picking up a little. This is on Thursdays at 2 pm for an hour. Why not go along and see for yourself – the first lesson is free so you've got nothing to lose.

We hope the slope up to the new Post Office will be done by the time you read this. We are still very concerned about the traffic situation such as crossing the road from all directions and are waiting for replies back to our letters about this anticipated problem.

I am always saying that we get some lovely things happen to us in Age Concern, like the gentleman who did a couple a kindness by taking them to Oxford – and, of course, brought them home again. When the couple wanted to pay for the fuel this gentleman would not hear of it. The couple were insistent so he said 'Make a donation to Age Concern' which they duly did, so our thanks go to these three people for their kindness. It is greatly appreciated. Another nice surprise was when I was in *The Bell* at Purton Stoke one night and Jim Caslaw came over and gave me an envelope for Purton Age Concern. Inside was a generous donation from the Purton Stoke Fund, so many thanks to all concerned.

Our final mystery tour of the season was enjoyed by all who went – a few more with thirty-three in all going. The route took in Highworth, Lechlade, Carterton, Witney, Bladon and Islip, then Murcott Village Hall where we stopped for lunch – and some lunch it was and very nicely presented with a lovely warm welcome. The tables were nicely laid out with water for us and we were served with a delicious chicken casserole. There were dishes of potatoes, carrots, peas and cauliflower to help yourself to and plenty of everything. This was followed by a choice of apple



---

crumble, meringue nests with fruit or cheesecake, with custard or cream and there were seconds if anyone wanted them. We finished up with tea or coffee and there were only four ladies doing all this – my word they were efficient!

The journey home took us round the outskirts of Oxford, Eynsham, the top of Burford, Northleach, Cirencester and home. By all the remarks everyone enjoyed the trip and the bonus was that we had a brand new coach expertly driven by Martin. Could I just add what excellent service we get from Ellisons Coaches. All the drivers are kind and we do not get any problems when making the arrangements. For example – this time the route I chose was going to Faringdon over the Thames at Radcot. The bridge here is a real hump-backed one and the coach would have bottomed out so Martin said ‘Don’t worry – we will go out through Filkins and pick up the A495 at Witney’ which he did and all was fine.

I know I have said this before but have you any ideas for what you would like out of these trips? As I have said we are very concerned about the numbers dropping. Are we going too far? Would you like to know where you are going? Perhaps you would like a shorter trip to a garden centre with tea or lunch or would you like to get your own meal or perhaps go to a pub for lunch. We might think we know what you would like, but do please let us know. Purton Age Concern are here to please – give me a ring on 770696 or talk to your street warden.

I am sure you will be as shocked as I was when receiving notification that the police will not be present to enforce the closure of part of the High Street for the Remembrance Day Service. I think this is very sad – we only ask for something like this once a year for about one and a half hours at the outside and it is such an important occasion. It has been so lovely over the past years with no traffic to worry about and you can concentrate on what you are there for, to remember those who gave their lives for us and our future.

We are holding our usual Christmas parties this year – the less able is in the Silver Threads Hall on Saturday 30 November from 3 pm to 5 pm, and on Saturday 7 December it will be the able party in the Village Hall at 5 pm, so book with your street wardens. Following on from that we have our Christmas market stall at the top shops. This is on Saturday 14 December from 9.30 am to 12 noon. Finally we will have the carols under the Christmas tree at the Institute with Purton’s own band with hot punch and mince pies on Christmas Eve. This is a little run-down on our Christmas activities and we will be having our usual festive season raffle.

I am sure you would like to go along with me and say how sorry we are to see the Helping Hand finish. They benefited everyone in the village, not like Age Concern who tend to look after their own so to speak. I doubt if there isn’t a family that have not known their kindness in one way or another and it has all been done in such a quiet way. Also it is hard work raising money and takes dedication and as an organisation they have been doing it for fifty years. While being sorry that they have finished, we also congratulate them for the last fifty years of happiness and help they have given to so many. I should have put ‘relief’ in there as well as you can imagine someone being at their wit’s end, not knowing which way to turn, when along comes the Helping Hand asking if they can help in some way. What comfort that must have been. So, many thanks for always being there for us and that is EVERYBODY.

---

Purton will not be the same without the kindness and thoughtfulness you have shown over the last fifty years. Our good wishes go with you all.

Let's finish on a high note. Sheila and I went to a lovely concert put on by the Cricklade Band organised by the Guide Dogs' committee. What is so refreshing about the Cricklade Band is how they bring their younger members on. The start of the concert was devoted to the Youth Academy, with one or two older members playing with them. I must say they gave us a variation of music which was very enjoyable. When they had finished the senior members took over and I don't know if my memory is going but, to me, they always seem better than the last time and they are always good, so many thanks to all concerned for giving us such an enjoyable musical evening.

Talking about music, the Community Choir under the directorship of that talented lady Mary New, are giving a concert at Cricklade Town Hall on Sunday 8 December at 7.45 pm. There are several local people in the choir and I mean Purton local, and also the Purton Hand Bell Ringers. If you would like to go I am sure a minibus could be arranged. If you are interested, give me a ring on 770696. By the way the tickets are £5. This will put you in the right frame of mind for Christmas.

TONY PRICE

## St Mary's Harvest Flowers

In the October magazine an announcement went out inviting everyone in the village to put flowers in St Mary's to celebrate Harvest.

Many people must have read the magazine, because on 6 October the Church looked absolutely beautiful, with glorious displays of leaves and flowers of every autumnal colour.

The regular church flower ladies welcomed all the arrangements and put them around the church. The window boxes were decorated with leaves; the pulpit was aglow with bright yellow flowers as well as dozens of orange gourds and pumpkins. The font was covered with a huge cushion of colour and even the porch was full of baskets of fruits, flowers and berries. Displays stood on the nave and there were leaves surrounding every pillar. So thank you to everyone who brought flowers ... in memory of someone special or of a special event; or just as a way of celebrating the warm and sunny summer we've experienced this year. Thank you all so much.



## Prayer for Purton

This month the churches in Purton are praying for everyone who lives or works in *Church Path, Church Street, Hyde Lane, The Hyde, Parkside, Church End and Manor Hill*.

If there is anyone or anything that you would like us to pray for during our Sunday worship, please contact [Revd Ian Tweedie-Smith](#), Revd Judith Wells or Revd David Perkins. Their contact details can be found on the inside cover of this magazine. You can give as much or little information as you wish. We don't even have to know a name.

---

## Church Floodlighting

With thanks to those who have sponsored floodlighting of St Mary's Church.



- 31 October The church was floodlit remembering **Carol Brown** on her birthday: who passed away 10 years ago on 2 November. Special friends are never forgotten.
- 3 November The Church will be floodlit on this Sunday for **All Soul's Day**, to remind us all of those we love who have died.
- 10 November St Mary's will be floodlit in memory of **Pete Holland** on the anniversary of his wedding and his birthday. From all the Holland family.
- 10 November is, of course, also **Remembrance Sunday** when we remember all those who have given their lives for our safety and our future.
- 16 November St Mary's Church will be floodlit in memory of **Trevor Bird (Trev)**, who left us on 16 November 2003. Miss you: love you always. Jean, Amanda and Paul XXX
- 19 November The Church will be floodlit in memory of **Duncan Bamford** on his birthday. Always loved and sadly missed by Jean, Gary, Tracey and Howard and the family
- 28 November St Mary's will be floodlit in memory and in celebration of **Mary Wightman** on her 99<sup>th</sup> birthday. Dearly loved and sadly missed by Roderick, Mark and Ben; Daughters-in-law, Grandchildren and Great Grandchildren.

*Please note: If you wish to book floodlighting during the next three months, when [Libbie](#) is not available, please contact [Sandra](#).*

*If the lights don't work, for any reason, we offer apologies and, of course, another floodlit evening for free, or your money back. These things happen occasionally and it is really disappointing for all concerned. We can only try our best.*

## Coffee and Chat

We meet every Wednesday from 10 am until noon at the Silver Threads Hall. We play Scrabble, cards, dominoes and other games, or you can just 'sit and chat'. If you want some company, come and join us – a welcome awaits.

BOB TINSON



## 1. Talk on Dementia – Wednesday 25 September

Around 60 attended the second successful Dementia Event on 25 September. Thanks are due to our speakers Dr Simon Manchip, Heather Wannell and Trish Chatterton.

## 2. G4P Members

We have two vacancies on the group. If you are interested please contact Kim at the surgery or email [groupforpatients@gmail.com](mailto:groupforpatients@gmail.com). You will need a proposer and seconder (both of whom must be patients of the Surgery).

The current G4P members are: Roger Mugridge (Chair), Marietta Crockford (Vice Chair, Treasurer), Sheila Fowler (Secretary), Trish Baker, Jeanne Perons, Christine Rawlings. Staff representatives are Kim Hiles and Linda Hoffen

## 3. Surgery website

The surgery website is [www.purtonsurgery.co.uk](http://www.purtonsurgery.co.uk). If you are interested in becoming a 'virtual patient' member of G4P – ie a subsidiary member who can be involved without attending meetings then you can sign up on the [web site](#) – look under 'Patient Participation Group – G4P' then 'Virtual PRG'

## 4. Text messaging reminder service

The surgery operates a Text Messaging Reminder Service. To opt into this service to receive appointment reminders there is a form available from the surgery or alternatively it can be downloaded from the surgery [web site](#).

## 5. Green Gable Surgery patients

A reminder that Green Gable Surgery in Cricklade is a branch surgery and as such does not have all the facilities of Purton Surgery.

## 6. Follow us on Twitter

G4P now has its own Twitter feed, username [@PurtonSurgery](#). However, this should not be used as a way of raising issues with the surgery. Communication with G4P is through the surgery or by emailing [groupforpatients@gmail.com](mailto:groupforpatients@gmail.com).

**7. ... and finally ...** some interesting facts ... Between 2002 and 2011 the number of full-time equivalent Consultants has increased by 54%, GPs by 23% and Practice Nurses by 14%. A full-time GP in England works an average of 50 to 60 hours per week. On an average day a GP will see 30-40 patients in the surgery, undertake 2-3 home visits and carry out anywhere between 5-20 telephone consultations.

We know that most patients value their GPs despite what the media suggests. Over the last 10 years patients' average life expectancy in England has increased by 2 years. It has been acknowledged that the excellent care provided by GPs and their practice teams has made a significant contribution to this.

*SHEILA FOWLER, Secretary, G4P*

## Obituaries

*Purton Magazine* is always happy to include obituaries. If you wish to have us publish an obituary of a loved one, please send it via the contacts on [page 4](#) of the Magazine.

---

---

## Surprise Visitor to the Library

At the October Storytime, families and children from Playclose Pre-school had a special visit from Bookstart Bear.

The children enjoyed listening to bear stories read by Rupert Whelan and Judith Wells (Storytime Volunteers) before Bookstart Bear made his guest appearance to sing rhymes with them.

He was there to promote the new Bookstart Bear Club which under-5s can join if they are a member of the library. Come along to the library to get your own passport and start collecting pawprints and certificates every time you visit. Storytime is the first Wednesday of every month at 10 am. All welcome.



CAROLYN KENNEDY

## Parish Plan – We need your Feedback

Following a significant amount of effort from members of the Parish Plan Steering Group, a draft copy of the completed Parish Plan is now available for review and feedback on the Purton Parish website at:

[www.purtonparishcouncil.gov.uk/Parish-Plan.aspx](http://www.purtonparishcouncil.gov.uk/Parish-Plan.aspx)

Alternatively, from the Purton Parish home page, on the menu bar click on “The Council” and then, from the options on the left, click on Parish Plan.

Paper copies are available in the Parish Council office, the Library and Purton Surgery. Some maps, in the printed version, will be better viewed online, where they can be enlarged to see greater detail. Copies in the library can be booked out for two or three days, allowing time for others to view.

We realise that it is a long document but there are a lot of interesting sections. History and Parish profile are general background information on the parish. Housing and Development are particularly important for the future of both the village and the parish.

Please read the sections that interest you and let us have your feedback to the following questions:

- What did you like?
- What didn't you like?
- What has been missed?

Please fill in the Comments section on-line or complete and return the paper copy, available from and returned to the Parish Council office or the Library.

The deadline for return of comment sheet is Friday 15 November.

Thank you for your help.

PARISH PLAN STEERING GROUP

## Shoebox News

**The day for filling the Shoeboxes** will be Saturday 2 November at the Methodist Church, from 10 am to 2 pm.

SYLVIA FREEMANTLE, Coordinator  
35 High Street, Tel: 770686





Thursday 3 October saw our very successful 1<sup>st</sup> Annual Sports Awards evening. Grant Turner, Olympic Swimmer and ex-Bradon student was the guest of honour and presented awards to over 100 students who were recognised for their outstanding achievements and development in over a dozen sports.

Grant, who was on the London 2012 Team GB Squad and has Commonwealth medals on his list of accolades, gave an inspiring speech to the young athletes. He spoke of how he stayed on track when things didn't quite go to plan and told the students: "Life is short. Whatever you do, give it your all!"

Grant added: "It seems that Bradon hasn't changed much in the 8 years since I left, but then it didn't need to. This is a great school!" and later Tweeted: "Great evening @BradonForestSch first ever sports awards. Very talented students and dedicated staff. Great to be back 8 years after leaving."



*Pictured: The Year 10 Football Team - Winners of the Team of the Year Award for their outstanding success in local, county and national competitions.*

Mr Andy Hartley, Head of PE, said in his presentation, "I am proud to be able to celebrate the outstanding sports success of our dedicated students. We often compete against specialist sports schools and colleges, and the fact we can hold our own is a credit to the passion of staff and students alike."

*ANDREW MORRISON, Headteacher*

### **Purton Profferings - Recycle your unwanted items to a new owner here**

**OFFERED:** Flymo Lawn Mower. Black and Decker Garden Shredder. 770397

**OFFERED:** Hardwood front door with feature glass panel. Width 32", height 78", thickness 1 3/4". Complete with hardware and lock with 5 keys. Good condition. 771794

**OFFERED:** Epson scanner with disc. Can deliver locally. Call Val 771043

**OFFERED:** 4 drawer filing cabinet – metal. Would look fabulous painted in bright colours. 771542

*To advertise in this section please contact Purton Magazine (address on [page 4](#)). Free advertisements for Free goods. 2 lines maximum.*

### **World's Biggest Coffee Morning**

Wow! Our coffee morning raised a wonderful £604.02. It was good to welcome friends from Purton to Lydiard Millicent Parish Hall and we very much appreciated the support and donations etc. for Macmillan Cancer Support.

With thanks,

VILMA MUNRO

---

## Purton Historical Society



At the September meeting the group enjoyed a very informative presentation given by Martin Buckland entitled 'A History of World Canals'. The period covered spanned the centuries from the ancient canals of China, to the British canals built in the Industrial revolution, to the modern canals and canal links still being built today. The variety of lock systems and ingenious engineering used in 'lifts' to transport boats onto different levels were all covered in this excellent presentation.

On 21 September the Purton Group participated in an exhibition at the central library in Swindon entitled 'Heroes and Villains'. Purton's heroes were Astronomer Royal Nevil Maskelyne and athlete James Kibblewhite whilst the villain was Robert Watkins, who was publicly hanged near Purton Stoke. Artefacts and information about their stories are on display in the Purton Museum. Open Wednesday afternoons and Saturday mornings.

Paul Booy's autumn course of 6 lectures entitled 'Tales from Amsterdam and the Lowlands' commenced on Wednesday 9 October in the Silver Threads Hall. These excellent, informative and entertaining courses are always well supported.

Future meetings:

Thursday 21 November - Memories of a Railway Man 1890 - 1930

Friday 6 December - Annual Christmas Social - tickets £12 from In Touch Services and at meetings

New members and visitors are always welcome.

*JAN NEATE, Secretary*

## 2013 Firework & Bonfire Spectacular!

1<sup>st</sup> Purton & Lydiard Scout Group are proud to once again organise this year's annual **Firework and Bonfire Spectacular** at Lydiard Park on Saturday 2 November 2013.



- Entry Fee: £8 Adult £3 Child (3-14 years)
- Easy pedestrian access via Lydiard Park, free car parking on site with vehicle access via Hook Street only.
- Gates open at 5.30 pm • Bonfire lit at 6 pm
- Fireworks scheduled for 7 pm. Please allow enough time to enter the event before the display begins!
- Entertainment during the evening, including live music from local band Interlight!

Various refreshment stalls and supporting local Scouting, plus this year's community charity, the Rainbow Trust.

Please leave all pets, sparklers and your own fireworks at home! This is to ensure your own and other's safety whilst in the park.

### About the Event

We put on the only large Firework and Bonfire event in Swindon. The display is run entirely by volunteers from Swindon & North Wiltshire Scouts. 1<sup>st</sup> Purton & Lydiard Scout Group oversee the organisation of the event. More information from the Purton Scout web-site: [www.plscouts.org.uk](http://www.plscouts.org.uk)

---

## Transforming Purton Parish - - Our Housing Part 2

Following the initial overview in this Magazine of the *Ps and Qs* flagship project, *Transforming Purton Parish*, we have been summarising brief extracts. So far we have extracted key messages and options concerning transport, waste, water, food, energy and health. This extract is about housing. This is the topic that most concerns those who live in the parish. It features as the number one issue in every survey during the past twenty years and is the one that arouses most passion. It is in two parts and this is Part 2.



*The settlement boundary (thick black line) within the parish (thin black line)*

Part 1 concluded with the question: What is the potential for housing in the parish? Wiltshire Council has produced, as part of its development of the Wiltshire Core Strategy, a set of Strategic Housing Land Availability Assessments. Of course not all the sites will be suitable and the land owners may not all be willing to put the sites forward for development. Appendix 11 in *Transforming Purton Parish* lists some of the potential sites that could be developed in the parish. The criteria that are currently available to determine suitability include:

- Yield (potential number of houses)
- Is the site within existing settlement boundary (see map above)
- Land Type (green or brown field)
- Impact on Area of Outstanding Natural Beauty
- Impact on Local Plan Zoned Public or Private Open Space
- Impact on Allotment Land
- Impact on Green Belt
- Access Infrastructure Constraints
- Drainage Infrastructure Constraints
- Ground Condition Constraints
- Impact on Flood Risk Areas
- Nature Conservation (e.g. a Site of Special Scientific Interest)
- 'Bad Neighbour' Constraint
- Legal/Ownership
- Market/Cost/Delivery (e.g. how easy will it be for this site to be developed or to come forward for development)

The above criteria are pretty superficial and do not take into account, for instance,

---



---

any added value of the potential housing to the parish, whether or not it adds to the resilience of the parish such as, would the site be better if developed for certain kinds of housing (e.g. first time buyers, or for older residents wishing to down-size) or for shops or for business units?

On the above criteria, houses could pretty much be developed anywhere within the settlement boundary with the appropriate tweaks to access and density. In the past, this has led to some odd-shaped houses with almost no garden, so as to fit odd parcels of land or, in the past, in the gardens themselves. The latter (“garden grabbing”) no longer happens, though while the option was in place it has changed the villages’ streetscapes for ever (or, at least for a hundred years).

The linear layout and development of Purton village has resulted in “glimpses” of spectacular views. From some vantage points, the views may extend to some 20 to 30 miles to the north and west. These “glimpses” are under threat as new development fills in the “gaps”. Current planning criteria completely ignore this quality.



*Left: A familiar “glimpse” from the High Street*

Whilst the new National Planning Policy Framework has changed the planning landscape it is a rather blunt instrument when planning applications are being considered. It has long been argued for a more intelligent approach to housing, an approach that has the flexibility to determine housing that is appropriate and fit for a variety of purposes; for the first time buyer, the elderly, those that have specialist requirements and the larger family homes; housing that is in keeping with its surroundings, housing that adds to the community, and for housing that does not lock-in problems (or costs) for the future.

Recognising the need to look at housing and locations more intelligently, an approach using dependency modelling, which is well established as a method of looking at vulnerabilities, has been used to assess resilience. In other words, it looks at something (in this case a house or group of houses) and considers what are the characteristics that determine whether or not a house(s) at a particular location will be resilient (able to withstand shocks such as flooding for instance) or adds resilience to the parish (e.g. is within walking distance to shops).

Parish life is becoming ever more affected by its dependency on services and systems, whose interconnectivity are increasingly more apparent. Consider the following challenges; flooding in the same old places year after year preventing easy access to and from the village, the lack of off-road parking in certain parts of the parish, particularly near to shops, creating nuisance for neighbours, the lack of enforcement for planning breaches which undermines trust, and so on. Each challenge has consequences far beyond its immediate problem.

The current planning criteria are largely irrelevant when trying to judge if a housing application is appropriate. They merely judge whether or not it passes a certain test (for example does it impact an Area of Outstanding Natural Beauty). Either it is “yes” or “no”. Whatever the answer, it is not balanced with other tests;

---

there is no interdependency test. The more interdependency the more likely is a decision to be robust (that is, if one aspect of a development is less beneficial another part may outweigh that). Dependency modelling concentrates on only those things which are vital for a successful (in this case, resilient) outcome. This cuts out most of the usual yet irrelevant tests and means the impact of a house or housing cluster in a particular location can be visualised and its effect can be assessed for consequences and potentially reveal less obvious implications than if simply tested against the usual criteria listed above.

How does this work in practice? It is now possible to test the value of a house or housing in terms of adding value to the overall resilience of the parish and be used to assess which locations are more or less desirable. In December 2011, Wiltshire Council reported on the *Strategic Housing Land Availability Assessment* which identified various potential housing locations throughout the parish (and elsewhere). The sites identified included:

Land at Mardove	Widham Farm
Blake House	Land to the Rear of Purton Court No 3
Land at Northcote	Land at Hansells Farm
Ridgeway Farm	Land at Hansells Farm 2
Land off Willis Way	Land off Station Road
Land at Restrop Road	Land Rear of Jewels Ash
College Farm	Land North of Moredon Bridge
Corner at Pear Tree/Witts Lane	Land at Locks Lane
Land North of Pavenhill The Pry	

Some of these have now been through the planning system and are now built (at Moredon Bridge now called Moulden View) or permitted and awaiting construction (Ridgeway Farm). For the rest, it is possible to develop a set of resilience factors and then model each location to identify which could add value to the parish and which would simply undermine the overall resilience, using dependency modelling.

Appendix 11, *Potential Land for Housing Development in Transforming Purton Parish*, indicates each of the above housing locations on a map and provides a modelling output. From that it is possible to rank the sites with those towards the top giving the best contributions to parish resilience and those towards the bottom giving the least, or none.

There is not enough space here to do justice to which sites are suitable for housing and which are not so please take a look at *Transforming Purton Parish* (Appendix 11) for all that detail.

The *Ps and Qs Foresight and Resilience Plan* called for:

- A range of different types and numbers of housing based on resilience criteria to inform future planning for the parish; and that
- A plan integrating water, food, energy, waste, transport and housing should be developed to avoid future problems.

The full report, *Transforming Purton Parish*, is freely downloadable from [www.CarbonBrake.com](http://www.CarbonBrake.com) and there is a hard copy in Purton Library. If you want to find out the latest on potential housing developments at Widham Farm, Restrop

---

---

Road, and behind Jewel's Ash, then simply go to [www.CarbonBrake.com](http://www.CarbonBrake.com) and subscribe to my email alerts.

RICHARD PAGETT ([secure@richardpagett.com](mailto:secure@richardpagett.com))

## Carnival

Not too much to report this month: Just a reminder that Purton Carnival Week will be Saturday 21 June - Saturday 28 June 2014 so please don't book your holidays over this week!

The theme for 2014 is CHRISTMAS and we would love it if all the houses on the High Street ... well the whole village would be great ... if you would decorate your windows and the outside of your house in Christmas decorations and Christmas lights for Carnival week 2014.

KIDS ... Don't forget to write your letter to Santa as he will be coming to Purton to collect them from you on 19 and 20 December.

ADULTS ... don't forget to collect your **FREE** 2014 PURTON PLANNER from Santa ... the Planners have all the term dates, bank holiday and Carnival dates listed and has those all-important useful numbers too

Purton Carnival Committee are assisting the Royal British Legion on Sunday 10 November (Remembrance Sunday) with their road closure order. The road will be closed as usual from 2.15 pm - 3.15 pm; the only exception will be official emergency vehicles.

*Cllr KEVIN LAW*

## The Lydiards & Purton Branch of The North Wiltshire Conservative Association

... invite you to a luncheon to be held at The Pear Tree, Purton, on Sunday, 17 November 2013 at 12.30 for 1 pm.

### Menu:

Traditional Roast Beef and Yorkshire pudding  
or Ras-al-hanout spiced lentil and spinach cottage pie, topped with parsnip and potato mash, glazed with Pear Tree honey

Strawberry and peach pavlova  
or Traditional Pudding of the day

Coffee and treats

Choices in advance please

Raffle

Tickets (£17.50) are available from [Mollie Groom](#) or [Jacqui Lay](#).

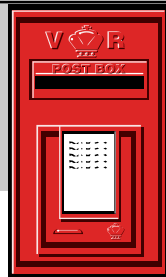
## Cricklade Country Market

The next Country Market is at *The Club at Cricklade* on Friday 29 November from 9 am to 11 am. Please call Anne on 01793 750125 for more details, to place an order or to become a market producer (baking or growing).

---

# PURTON POSTBAG

*The Editors reserve the right not to publish letters received where space and content dictate. No correspondence can be accepted for publication without the proper name and address of the correspondent being supplied. However those details may be withheld from being published if so requested.*



## ■ BADGERS

With the badger debate still raging and people such as Brian May (of *Queen*) having strong views and input, I believe the future debate regarding the cull that highlights T.B. and cattle will not be the only reason the badger population will have to be controlled, as are deer.

In recent years the badger population have increased considerably, the proof of this being the number of sets visible when walking the fields.

I have lived in Ringsbury Close for forty-eight years. It is in the last four years that badgers have started to become more than a nuisance, in fact I would say a pest, destroying crops, fences, lawns, establishing latrines in the middle of vegetable patches and flower beds. To my amazement they are able to make holes in chain link fencing with their powerful teeth and jaws. Nothing deters them once they have established a run.

Ten years ago, at dusk, I used to take my grandchildren to Ringsbury Camp for a "badger watch". Now they can see them in my garden.

I thought the badgers were picking on me until recently speaking with other Ringsbury Close residents who are experiencing the same problems.

I believe the problem has occurred because individuals think it is lovely to attract them into their gardens by feeding them. Unfortunately this is urbanising them and encourages them to seek easy food by encroaching further and further into built up areas, as

foxes have.

Those who feed them and encourage them are doing the badger no favours as there is adequate food for them to forage in the natural habitat in the countryside so please, those who are feeding them, do the badgers and their neighbours a favour and stop feeding them, otherwise I believe the badger population will have to be controlled one way or another.

Derek Downs

## ■ FAREWELL

Thank you for all the cards, presents and good wishes for our future life in Devon. Ed and I shall miss taking part in all our various activities in the village, but like Tony said in his lovely article I am sure we shall soon become involved once again here in Devon.

Purton and its people will always be special to us. Many thanks once again.

*Belinda and Ed Prowse*

## ■ GREENHILL COUNTRY FAYRE

The residents of Greenhill Nr Hook organized a Country Fayre charity fund raising afternoon on Saturday 14 September in aid of the Prospect Hospice, and wanted to thank you for advertising the event in the Purton Magazine. The event was very successful and we raised a total of £316.66, which was presented to the hospice.

*Neil Gerrans*

■ SHOEBOX FUNDRAISING DAY

What a fantastic result. A profit of £1,445.27 was made. Over 90 people came and 50 lunches were served.

Many people gave donations. As a family, we feel very privileged that so many people came to our home and supported this project. It was an amazing day.

Thank you everyone.

*Sylvia, Colin and Moira*

■ PURTON LUNCHEON CLUB

Elizabeth Ward, President of the Purton Luncheon Club would like to thank St Mary's Church for the generous gifts of fruit and vegetables which were presented to the members on Tuesday 8 October to commemorate the Harvest Festival.

The members were absolutely delighted with the produce which was divided up among them and are most grateful to St Mary's for this seasonal bounty.

■ HELPING HAND

I am sorry Helping Hand is finishing because there was always in sickness or difficulty a plant and card or handout given with a smile.

At a meeting a woman once said pensioners aren't hard up these days. I don't know which pensioners she meant but I for one looked forward to the Helping Hand and Age Concern vouchers. They meant I could go to the butcher and have the luxury of being able to have a choice for meals to come.

Some men said they bought themselves a bottle of something special with them.

The Helping Hand will be sadly missed. Thanks for all the hard work behind the scenes and to Andrew and the shops for letting us spend our vouchers with them.

*Joan Garlick*

## Community Café Update

If you are like me, when I have some paperwork to do I keep putting it off until the day before the deadline. If that's you, then you probably have not yet completed and returned the Community Café questionnaire in the centre of last month's Purton Magazine. So before you put it in recycling, please detach and complete it and return it to either the Best One or Hiscock the Butchers. Or if it has already been thrown away you will find extra copies of the questionnaire at these shops too. The collection boxes will only be in the shops until Sunday 3 November.

We are also keen to have more input from the younger people of Purton so we can be sure the design of the café meets the needs of all ages. If you have children old enough to use the café please encourage them to complete a separate questionnaire telling us what they want.

If you have completed the questionnaire already, then thank you. We will report back on all you have said about the project in next month's Magazine. However, we are already very encouraged by the feedback to date with overwhelming support for the concept and many volunteers, aging from under 18 to over 60. But we still need more volunteers to make the café a success. Please do not be shy to put your name forward if you think you might be able to help.

*[DAVE & MARY NETTLETON](#)*

---

# Purton Diary - November 2013

1	F	3.30pm	Communion at The Cedars
2	Sa	10.00am	<i>to 3pm</i> : Shoebox Filling Day at Methodist Church
		12 noon	<i>to 4pm</i> : Purton Food Festival at Village Hall (organised by W.I.)
		4.00pm	Bonfire & Hallowe'en Night at Purton House
		5.30pm	<i>Bonfire 6pm</i> : Scouts Firework Spectacular at Lydiard Park - <a href="#">p15</a>
3	Su		<i>until shops closure</i> : Deadline for posting Community Café questionnaire ( <a href="#">p21</a> )
		8.00am	Communion at St Mary's Church
		10.30am	Morning Worship at the Methodist Church
		10.30am	Family Service at St Mary's Church
		6.00pm	All Souls Service at St Mary's Church
6	W	10.00am	<i>to 10.30am</i> : Story Time at the Library (ages 0-4)
		6.30pm	Tennis Club juniors presentations and AGM at Red House; followed by main Club AGM (7.30pm)
7	Th	10.30am	Communion at St Mary's Church
8	F	9.30am	Age Concern Minibus to Swindon
		6.00pm	<i>to 8.30pm</i> : Purton Artists Exhibition at Village Hall
9	Sa	10.00am	<i>to 4pm</i> : Purton Artists Exhibition at Village Hall
		7.30pm	<i>for 8pm</i> : Purton Twinning Wine Tasting at Silver Threads Hall
10	Su		<b>Remembrance Sunday</b>
		8.00am	Communion at St Mary's Church
		10.00am	<i>to 4pm</i> : Purton Artists Exhibition at Village Hall
		10.30am	Morning Worship at the Methodist Church
		10.30am	Communion at St Mary's Church
		2.30pm	<b>RBL Remembrance Service</b> at Cenotaph (High Street closed 2.15 to 3.15pm)
		6.00pm	Evensong at St Mary's Church
11	M	7.30pm	Purton Parish Council meeting at Village Hall - press and public welcome
12	Tu	11.00am	Songs of Praise at Ashgrove House
		7.30pm	Purton Yacht Club at The Angel
13	W	2.30pm	Methodist Women's Fellowship meeting at Purton Methodist Church with slides by Dave Seviour
14	Th	10.30am	Songs of Praise at The Cedars
15	F	5.00pm	( <i>approx.</i> ) Deadline for return of Parish Plan Questionnaire comments to Parish Council or Library
		7.30pm	"Logic of Nothing" at Bradon Forest Theatre ( <a href="#">p34</a> )
16	Sa	2.00pm	Jumble Sale at Silver Threads Hall (by Silver Threads)
		7.30pm	St Mary's School 1958-9 Reunion at Purton Club ( <a href="#">p26</a> )
17	Su	8.00am	Communion at St Mary's Church

---

---

	10.30am	Morning Worship at the Methodist Church
	10.30am	Communion at St Mary's Church
	12.30pm	for 1pm: N. Wilts Conservatives luncheon at <i>The Pear Tree</i>
	6.00pm	Evensong at St Mary's Church
19	Tu	7.45pm Royal British Legion at The Red House
	8.00pm	After 8: <i>Art, interpretation &amp; appreciation</i> - led by Barbara G at her house
20	W	2.00pm Communion at Ashgrove House
	7.30pm	Purton Evening WI at Village Hall: <b>Open Meeting</b> - <i>Antiques Road Show</i>
21	Th	1.00am Ito 3pm: Christmas Bazaar at 89 Pavenhill
	7.30pm	Historical Society at St Mary's School Hall: Roger & Mary Bedells with Roger Trayhurn dramatising: <i>Memories of a Railway man, 1890 - 1930</i>
23	Sa	11.30am to 2pm: St Mary's Church Christmas Market at Village Hall
24	Su	8.00am Communion at St Mary's Church
	10.30am	Morning Worship at the Methodist Church
	10.30am	Communion at St Mary's Church
	6.00pm	Evensong at St Mary's Church
26	Tu	7.30pm Gardeners' Guild at Silver Threads Hall: American Supper with Entertainment
28	Th	7.30pm Helping Hand Ladies' Night at Village Hall
29	F	2.30pm Communion at White Lodge
	7.45pm	World Challenge Quiz Night at Red House
30	Sa	3.00pm to 5pm: Less able Christmas party at the Silver Threads Hall

---

### Every week

Tu	9.15am	to 11.30am: Purton Toddler Group at Village Hall
	7.30pm	Bridge Club at the Red House
W	10.00am	to 12 noon: Coffee and Chat at Silver Threads Hall
	6.30pm	Rock Solid at the Methodist Church
Th	9.15am	to 11.30am: Purton Toddler Group at Village Hall
Th	11.15am	to 1pm: New Beginnings at Purton Youth Centre
Th	2.00pm	to 3pm: Age Concern T'ai Chi at Millennium Hall
Th	2.30pm	Pram Service for pre-school children at Methodist Church

### Moon Phases

3 November    
 10 November    
 17 November    
 25 November

If your Club or Organization's Events are not included in the Diary Pages, let us know:

Purton Magazine c/o In Touch Services, 115 Pavenhill  
or email [mail@purtonmagazine.co.uk](mailto:mail@purtonmagazine.co.uk)

Please note: priority is given to events which are open to everyone.

# PURTON PLACARD

Groups are invited to submit to the Editor details of forthcoming events in, for and on behalf of our community.

## All Souls' Service



3rd November 2013, 6 pm  
St Mary's Church,  
Purton.

All are welcome  
to remember and pray  
for those who have died.

## PURTON AGE CONCERN CHRISTMAS MARKET STALL

on Saturday 14 December  
outside the Pavenhill shops  
from 9.30 am to 12 noon

Lots of bargains, bric a brac,  
toys, books, home made cakes,  
and lots more with a last chance  
to buy our Christmas raffle tickets

## World Challenge Quiz Night

At Purton Village Hall  
Friday 29 November at 7.45 pm  
£2 per person

Maximum 6 people per team  
Licensed bar

For tickets contact  
Dee 771435 or Lorraine 772357

## Christmas Coffee Morning

18 Church Path  
Friday 6 December  
10 am - Noon

Cakes, Books,  
Bric a brac & Raffle  
In aid of local charity



SWINDON & NORTH WILTSHIRE SCOUTS  
**FIREWORK & BONFIRE  
SPECTACULAR 2013**  
**2<sup>nd</sup> November**  
**Lydiard Park**

Entry: £8 Adult £3 Child  
Gates open at 5.30pm (cars via Hook Street)  
Bonfire lit at 6pm  
Entertainment during the evening  
Live Music from INTERLIGHT

Please leave your own  
fireworks and squanders  
at home!

visit [www.plscouts.org.uk](http://www.plscouts.org.uk) ring 534500





Purton  
Evening W.I.



### **Purton Food Festival**

Saturday 2 November  
12 noon - 4 pm  
at the Village Hall

Entrance £1 adults  
children 16 and under FREE

Featuring Local  
Food Producers & Retailers  
Purton W.I. Recipe Book launch

Second hand cookery,  
craft and gardening book stall.

Cake and Biscuit Decorating for kids

Soup, mulled wine, cakes, biscuits,  
soft drinks and tea/coffee.

Exhibitor samples!

And lots more!

More information or to Exhibit:  
Contact [Helen](#)

Purton Silver Threads  
**Jumble Sale**

16 November at 2 pm  
Silver Threads Hall  
Lots of bargains  
Raffle Refreshments

St Mary's CE Primary School

### **LADIES' PAMPER EVENING**

Friday 11 October  
7 - 9 pm

£3 (including drink on arrival)  
Licensed bar

Purton Helping Hand  
**Ladies' Night Out**

28 November  
7.30 pm at the Village Hall  
Watch for posters  
with more details

### **SHOEBOX FILLING DAY**

Saturday 2 November  
10 am - 2 pm  
Purton Methodist Church  
(The cost of sending  
a filled box is now £3)

### **Christmas Bazaar**

at 89 Pavenhill, Purton  
on 21 November  
11 am to 3 pm

Come and get your stocking fillers,  
have a go on the raffle  
and enjoy our homemade  
refreshments  
at a very reasonable price

Raffle Bric a brac  
Christmas and other goodies  
Cream teas, scones, soup & rolls,  
mince pies ...

All proceeds for  
Pavenhill Amenity Fund

### **Whist Drive**

in aid of  
Wiltshire Air Ambulance  
on Wednesday 30 October  
7.30 pm at  
Silver Threads Hall  
Raffle & Refreshments  
Tickets £2  
on the door

**MORE PLACARD  
OVERLEAF**

# PURTON ARTISTS 32ND EXHIBITION

TO BE HELD  
AT

THE VILLAGE HALL  
LOWER SQUARE, PURTON

NOVEMBER

FRI 8th 6pm-8.30pm  
SAT 9th 10am-4pm  
SUN 10th 10am-4pm

Light Refreshments available



## **Purton School, St Mary's Class of 1958-59 Reunion**

Saturday 16 November,  
7.30 pm onwards.  
Wives, husbands, partners  
and friends welcome.  
Reunion at Purton Club, Station Road  
£5.50 per head  
to be paid in by 1 November

Details from  
Peter Kinnett (01793) 771716  
Basil Mills (01793) 772418

## **Charity Christmas Craft Fayre**

*in aid of Malmesbury branch of Parkinson's UK*

### **Flaxlands Manor Farm**

Flaxlands

Nr Wootton Bassett SN4 8DY

Saturday 26 October 2013.

10.30 am - 3.30 pm

Plenty of free parking. Admission free  
Christmas starts here – local crafters  
selling unique gifts that would make  
excellent Christmas presents.

Activities for children

Cafe serving homemade cakes and  
delicious hot food all day.

## **St Mary's Church CHRISTMAS MARKET**

Saturday 23 November  
in the Village Hall  
11.30 am - 2 pm

Come and have your lunch!!

Lunches served – Hot meat baps

Many attractions and stalls, including:

Home-made produce

Activities for children

St Mary's School Choir will be singing

Mince pies, teas and coffees

## **Jubilee Gardens Open Day**

Saturday 7 December

from 10 am to 2 pm

Sale of hyacinths, Christmas Wreaths,  
bird boxes, pickles and much more.

Refreshments

Raffle and tombola

Free admission

Church Bush Hall, Purton Stoke

---

# Great War Project

## 4. Britain by the early Twentieth Century

Queen Victoria's reign and the period just before it was one of major change. In the 18<sup>th</sup> century, Britain was largely an agricultural nation, although the Agricultural Revolution had mechanised many parts of it. The first national census of 1801 showed that, of a population of around 10.5 million, only 25% lived in towns and cities.

Supposedly to "solve" resentment and rebellion in Ireland, the British government passed the Acts of Union of 1800-01 and Ireland was incorporated into the United Kingdom. St Patrick was added to the Union Flag to give the flag we know today. Problems from this union will be covered in a later article.

In the 1790s, during the French Revolution, many of the aristocracy that controlled France had been guillotined including King Louis XVI. France descended into chaos. To avoid the same fate, things would have to change in Britain.

Our political system was based on government by the Houses of Commons and Lords made up solely of men and the Lords could overrule any law passed by the Commons. Only men with money and property could vote but no women regardless of their wealth or standing.

Population shifts to the towns showed up the absurdities of the old system. Larger towns and cities were hardly represented in parliament but in "rotten boroughs", hardly anyone could vote but they returned Members of Parliament. Of the most ludicrous, the village of Dunwich on the Suffolk coast had mostly fallen into the sea but returned 2 MPs.

In 1819 a mass meeting at St Peter's Field in Manchester heard speeches demanding parliamentary reform. Halfway through, magistrates declared the meeting illegal and sent cavalry in to break it up. In the confusion the cavalry charged the crowd with 11 killed and 400 wounded. The "massacre" was sarcastically called "Peterloo" after the British victory at Waterloo 4 years previously.



*King William IV*



*Queen Victoria*

A year later, in the "Cato Street Conspiracy", radicals planned to overthrow the government. They were caught: five were hanged and another five transported to penal colonies in Australia. New farm and industrial machinery also threatened labourers' jobs and in the "Swing Riots" of 1830, nine men who had wrecked machines, were hanged and others transported.

Under pressure for political change in the reign of King William IV, the Great Reform Act (1832) swept away the rotten boroughs, gave more MP seats to industrial cities, and the middle class was given the right to vote. Even so, no women could vote and only one in seven men could ... and voting was still

---

done in public. The new Parliament passed acts promoting factory and mine safety and forbidding the abuse of child and women workers.

Queen Victoria came to the throne in 1837. Industry flourished in this period with the development of railways which brought a standardised time system to the country as well as improving transport. Purton got its two railways in this period: Purton Station on the Cheltenham & Great Western Union Railway opened in 1841; Blunston Station on the Swindon & Cheltenham Extension of the Midland & South Western Junction Railway opened in 1881.

A new postal service brought in a flat price regardless of how far the letter was going within the country – the Penny Black postage stamp. Cinema, telegraph, telephones, cars and aircraft, were also developed later in the Victorian era as well as photography whose pioneers included William Fox Talbot at Lacock.

Many of today's sports were formalised in this period: cricket, cycling, croquet, roller skating, horse riding, modern tennis and football with the Football League being set up in 1888. Swindon Town Football Club was founded in 1879 and turned professional in 1894.

Back to the political front: the 1840s saw the Opium Wars where Britain fought to preserve the right to sell opium to the Chinese and resulted in the acquisition of the New Territories of Hong Kong; Britain was at war in Afghanistan; the Irish Famine and land clearances saw mass emigration from Ireland and Scotland; and the Corn Laws were repealed – they had artificially raised the price of grain by imposing high import duties putting the price of grain products such as bread above the reach of many.

Then in the 1850s came the restoration of the Catholic Church in England and Scotland; the Great Exhibition (1851); the Crimean War (covered in Part 2, September 2013 issue); and Charles Darwin published *On the Origin of Species*.

Having lost an empire with the American War of Independence (1775-82), a new empire was being created. At the start of Queen Victoria's reign, New Zealand became a British colony (1840). Exploration and mineral finds in Africa was feeding a land grab there while the power of the Royal Navy at sea brought many islands and coastal nations under the Crown. The Indian Mutiny (1857-58) showed that the British East India Company was incapable of ruling the subcontinent ... the company was abolished and India brought under direct British rule. It is really only after the acquisition of India that the term British Empire can truly be applied and the term *Indiæ Imperatrix* (Empress of India) was added to Queen Victoria's title and *Ind. Imp.* to all coins up until the death of King George VI.

Victoria's consort, Prince Albert, died in 1861 leading to a long period of mourning by the Queen but, since Britain was, and is, a Republic in all but name, political life went on even without the Queen's active participation. The colony of British North America became the Dominion of Canada in 1867. In 1875 Britain purchased Egypt's shares in the Suez Canal guaranteeing the sea-route to India and the East; Egypt became a British Protectorate in 1882. Under the Treaty of Berlin of 1878 (see Part 2), Cyprus became a Crown colony.

Southern Africa became a battlefield. In 1879 the Anglo-Zulu War broke out with the Battle of Isandlwana. In 1881 British forces were defeated by Boer farmers at the Battle of Majuba Hill, resulting in the reinstatement of the Afrikaner South

---

African Republic, and ending the First Boer War.

Back at home, social reform continued: the Elementary Education Act of 1870 made basic State Education free for every child under the age of 10. Trade Unions developed for all workers and led to the birth of the Labour Party.

On the political front, between 1867 and 1872 the Second and Third Reform Acts moved more constituencies from rural areas to towns and cities and brought the electorate up to 5 million though suffrage, the right to vote, was still restricted to wealth and being a man. The total population at the time was about 30 million – 3 times that of 1801. In 1872 the Secret Ballot Act allowed people to vote without risk of recriminations from landlords and employers. Women demanded the right to vote and the Suffragette movement was born ... more on this in a later article.

County councils and county borough councils were created in England and Wales in 1888 and in 1894 Parish Councils took over civic duties in rural towns and villages from the ecclesiastical parishes. These civil parishes, including Purton Parish Council, were grouped into rural districts – Purton was part of the Cricklade & Wootton Bassett Rural District.

The century ended with more military activity. In 1898, at the battle of Omdurman, British and Egyptian troops led by Horatio Kitchener defeated an uprising against Turkish-Egyptian rule in the Sudan and brought the Sudan under British control. Winston Churchill took part in that battle and there is a wonderful military depiction of the battle in Purton Museum.

Further south again, the Second Boer War started in 1899 between Britain and the independent Boer republics. The 2<sup>nd</sup> Battalion of the Wiltshire Regiment (2<sup>nd</sup> Wilts) was stationed in Guernsey but was dispatched to South Africa, brigaded into the 12<sup>th</sup> Brigade and assigned to garrison the town of Rensburg, where the 2<sup>nd</sup> Wilts lost 14 men killed, 57 wounded, and more than 100 prisoners taken. The Wiltshires were pulled back to prevent a Boer break-through, but two companies, on outpost duty, didn't receive the order to retreat. They got back to their battalion's main camp to find it occupied by the Boers and were taken prisoner.

The 2<sup>nd</sup> Wilts, with the 12<sup>th</sup> Brigade were sent to capture Christiaan de Wet's Boer commando stronghold at the town of Bethlehem. The town was captured and the brigade followed de Wet to Slabbert's Nek (July 1900) where, with the Royal Irish Regiment, two companies of the 2<sup>nd</sup> Wilts took 4,000 prisoners. De Wet and a few of his men managed to escape and the Boer War moved into a guerrilla phase. The 2<sup>nd</sup> Wilts were reassigned to patrol areas north of Pretoria and later to defend the Pretoria-Pietersburg railway line. In early summer 1901, the Wiltshires helped capture 229 Boer commandos and 18 wagons.

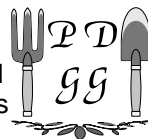
In 1902, the Second Boer War ended with the defeat of the Boer commandos and the signing of the Treaty of Vereeniging. The 2<sup>nd</sup> Wiltshires returned to England in 1903. There must have been Purton men in the Boer War and I would love to know if anyone in Purton has family memories of the Wiltshires' time in South Africa.

In the meantime, Queen Victoria had died in 1901 and the British Royal House changed from Hanover to Saxe-Coburg Gotha with the accession of her son King Edward VII. A new era had begun.

*RICK DIXON*

---

## Purton & District Gardeners' Guild



Our annual 'Mini-Show' was the focus of our September meeting and despite the poor turnout there was no shortage of entries. Members were presented with an assortment of flora, vegetables, fruit, cakes, jams and chutneys from which they voted for their favourite entry in each of the 23 classes exhibited.

As usual the cake table with its array of Victoria sponge cakes, Ginger cakes and cheese scones proved to be ever popular, with members sampling the goodies on display before casting their vote.

Show winners were as follows:

- Flowers (Classes 1-7): 1<sup>st</sup> Mary Read, 2<sup>nd</sup> Maureen Griffin, 3<sup>rd</sup> Marjorie Shailes
- Vegetables (Classes 8-13): 1<sup>st</sup> Mary Read, 2<sup>nd</sup> Margaret Goodall, 3<sup>rd</sup> Val Faulkner
- Fruit (Classes 14-17): Equal 1<sup>st</sup> Mary Read and Nigel Bunce, Equal 3<sup>rd</sup> Margaret Gregory and Maureen Griffin
- Domestic (Classes 18-23): 1<sup>st</sup> Margaret Goodall, 2<sup>nd</sup> Mary Read, 3<sup>rd</sup> Linda Roberts

In previous years committee members voted for the 'Best in Show' from all 23 classes, but this year, in a break from tradition, the vote was passed to club members. Congratulations to Mary Read who proved to be the winner of the cup for 'Best in Show' with her gorgeous white flower arrangement.

Mary's 37 points from all 23 classes also gained her the title of 'Overall Winner' and she was presented with a second cup to display on her mantelpiece! A worthy winner we all agreed.

Congratulations to all our winners and thanks to all those who exhibited for without you there would not be a show.

As votes were being counted members enjoyed refreshments whilst Maureen Griffin entertained them with some amusing poetry.

Our next meeting will be on Tuesday 26 November at 7.30 pm in Silver Threads Hall, when we will be holding our 'American Supper', and Paul Evans will be reading poems and anecdotes. So do join us. Just remember to bring a plate of 'goodies' to share.

*MARGARET GOODALL, Secretary & LINDA ROBERTS, Chair*

## On the Lighter Side

### Soon be Winter ...

Part of the preschool teacher's job was to help the children put on their coats and boots. One day after school when the children were getting ready to leave, one child came over to her in tears. "My boots have gone!" she wailed. "No, there they are in the corner," the teacher said pointing to them. "Those aren't mine!" she said and stamped her foot. "Mine had snow on them!"

### Cats & Dogs

A dog thinks: 'These people I live with feed me, love me, provide me with a nice warm, dry house, pet me and take good care of me ... they must be gods!'

A cat thinks: 'These people I live with feed me, love me, provide me with a nice warm, dry house, pet me and take good care of me ... I must be a god!'

---

---

## Heroes & Villains

The Purton Historical Society's Maskelyne panels have been on their travels again! This time they were transported to Swindon Central Library where the PHS was taking part in the annual event organized by the Swindon and District History Network. The theme for 21 September 2013 was "Heroes and Villains".

A wide variety of heroes and villains was included and the day was organized by the Local Studies Leader Darryl Moody. This was the fourth local history open day and ten clubs and societies that make up the thriving heritage scene took part. It was the first time the PHS has been involved but we do attend the SDHN meetings regularly.

Local groups included those from Wroughton and Rodbourne, Broadgreen and Queenstown, the Wiltshire Family History Society, the Swindon Society, Mechanics' Trust and the Alfred Williams Heritage Trust while the Wiltshire and Swindon History Centre in Chippenham was represented by Claire Skinner, principal archivist, who has visited Purton museum on several occasions. Swindon 105.5FM broadcast live interviews with those taking part during the afternoon.

The good, bad and the ugly were depicted – and not only humans. Wroughton highlighted equine heroes. Some poor planning decisions made by the authorities dating back to the 1950s were considered outrageous. These destroyed fine features from the past instead of preserving them.

Heroes included the poet Alfred Williams, a serious contender as a hard working, self-taught man, the nature writer Richard Jefferies and Swindon Town footballer Freddie Wheatcroft who played two hundred times for the club between 1904 and 1917. He was killed during WW1.

Darryl Moody commented that the day had been a success. "Perhaps in an era of pointless, fleeting fame, people like to celebrate individuals of outstanding achievement while some always seem fascinated by a real villain. The idea is enduring and will always be of interest."

Our heroes were Rev Dr Nevil Maskelyne, 5<sup>th</sup> Astronomer Royal, and James Kibblewhite, Purton's greatest athlete. Born in the village in 1866 he became a runner of international stature and enjoyed remarkable success for ten seasons, winning prize money in excess of £1,200.

Robert Watkins was our villain. In 1819 he robbed and killed a coal merchant returning from Wootton Bassett to his home in Cricklade and was condemned to be hanged where the crime had been committed although he protested his innocence and read the 108<sup>th</sup> Psalm before an enormous crowd of around 12,000 people. The Vicar's seven-year-old son was a spectator, held up by the gardener to get a better view!

The PHS would like to thank Purton Parish Council for arranging the transportation of the panels from the Museum to the Central Library and back after the event. A section of our display remained in the Library for a month to promote the village and its interesting history and encourage visitors to explore Purton for themselves.



*JEAN BELT*

---

## Purton Evening WI [www.purtonevewi.org.uk](http://www.purtonevewi.org.uk)



At the meeting of 18 September, speaking more seriously than normally, President Trish Baker told us of problems to be tackled, including the fact that we have to find three replacements for the Committee very soon. Our calendars and diaries had arrived and reminded us how near is that time! (Also you will need to put in 3 February 2014 for Soup and Sweet, postponed from November 2013).

Our funds are lower than we would like. National subscriptions are going up next year to £34.70 and nearly half of that is returned to us in various forms, but we do need to bump up our own reserves. We could cut back on our Birthday and Christmas festivities a little, but not the wreath for Remembrance Day. Ideas for fund-raising would be welcomed!

Our expert speaker, Sue Burn from the Batsford Arboretum (near Moreton-in-Marsh) was first class. Needing no microphone, she expertly led us through the many pictures of the arboretum, beautiful at all times but in autumn, of course, the leaves were breathtaking in their colours. Must go there!

You will have seen from the programme that 20 November is an Open Meeting – our own Antiques Road Show, with Mark Anderson from Kidson Trigg – so do please bring along your non-member friends, who will be most welcome. The competition is for Your Favourite Antique, and in social time Mark will value some of our own antiques. This offer will surely be a crowd-puller, so don't be late!

As always, see you there, if possible beating you to the sales tables! Recently there has been a fine display of ginger marmalade, gooseberry jam, tomatoes, books ...

*CONSTANCE REED*

**Food Festival:** A reminder that our very own Food Festival takes place on Saturday, 2 November between 12 noon and 4 pm at Purton Village Hall. Entrance £1 adults and children 16 and under FREE. Our excellent response from local food producers and retailers should let you walk away with much of your Christmas menu catered for. You may also find that you can tick a few items off your Christmas present list as well.

We will be launching our very own recipe book – with £1 per copy sold going to Purton Luncheon Club – as well as having a second hand cookery, craft and gardening book stall. There will be cake and biscuit decorating for the kids, and much more. We don't want you to go hungry on the day either so we will have soup, mulled wine, cakes, biscuits, soft drinks and tea/coffee, as well as some of our exhibitors having samples to tempt you with!

We look forward to seeing you all. More information from [Helen](#).

## Purton Luncheon Club

The Luncheon Club at the Silver Threads Hall are looking for volunteers to cook or help in the kitchen on Tuesdays or Thursdays once a fortnight. Hours are from 10 am to 1.30 pm.



This is a very friendly team providing lunch for the Senior Citizens. Ring Pat Suddaby for more information on 01793 771331.



---

## The Royal British Legion - Purton Branch



The Purton Branch members would like to take this opportunity to thank everyone in Purton and the surrounding area for their generosity over the years towards the Poppy Appeal, and the support of everyone is very much appreciated.

The financial year to the end of September 2013 was very successful, resulting in a total for the Branch of £8,405.32, which is another increase of more than £500 on last year, so thank you all very much.

We would also like to thank, in particular, Joyce Berry, her daughter and son-in-law Shirley and Mike Lawrence, and all the many other wonderful people who give their time to help to collect for the Poppy Appeal.

In addition we would also like to thank all the customers of ASDA who gave so generously.

**Remembrance Service:** The Remembrance Service will be held on Sunday 10 November at 2.30 pm at the Cenotaph. Regardless of the weather it will be held outside, so come dressed accordingly but, in the event of inclement weather, for those who don't wish to stand outside, the Silver Threads Hall will be available and a speaker will relay the service indoors.

We hope that, as now has become the custom, the road will be closed for approximately one hour and diversions put in place, but this year marshalled by volunteers. Please have a little patience and understanding as things may not go quite according to plan.

The Branch would again like to extend a warm welcome to any serving or ex-service members of the civil or military uniform branches who would like to join us in the parade, regardless of whether or not you are British Legion members.

## St Mary's Church: Exhibition in the Museum

A large crowd of witnesses meets Trivial Pursuits. Our unlikely combination you may think but all will be revealed if you visit the Museum in November and December. Each of four main specialist areas in Trivial Pursuits – Art, Literature, History and Geography – will be illustrated by reference with St Mary's and its history.

The period of the exhibition fits well with the church's life because it covers Advent, the beginning of the church's year and Christmas, the celebration of Christ's birth, but the aim of the exhibition is to inform and entertain and it is hope that it will appeal not just to church people but to those of all faiths or none. And that means it should appeal to the whole village!

### DISCLAIMER

Contributions to Purton Magazine are always welcome for consideration on the understanding that the contributor's name and address are supplied (but may be withheld from publication on request) and that all related copyright issues have been cleared for publication in this Magazine - especially with those recognisable in any photographs. It follows that opinions expressed in the Magazine are solely those of the respective contributors.

Advertisements are accepted in good faith and their inclusion does not imply the Magazine's endorsement of the product or service.

---

# WHAT'S ON?

## Purton Artists' Art Exhibition

**This is to be held in the Village Hall Purton on 8, 9 and 10 November.**

Everyone is welcome and we would love to see you there

It starts with a preview evening from 6 - 8.30 pm with wine ,tea, coffee, soft drinks and nibbles.

Saturday and Sunday opens at 10 am until 4 pm with refreshments available.

There will be all manner of art on display and to buy – paintings, photographs, woodwork, ceramics, handbags, hand made cards etc

An unmissable weekend of great art and a chance to catch up with friends for a drink and a chat.

If there are any strong men available on Friday 8 November at 12.15 pm we would welcome your help unloading our screens.

For more information please call Brian Coe on 770102.

## Purton Twinning Association

Purton Twinning Association will be holding a Wine Tasting evening on Saturday 9 November at the Silver Threads Hall.

There will be a talk on wine and tasting by Robin and Jenny Hibberd representing Savary de Beauregar. The entry is £5, to include a bread and cheese supper. Any wine ordered on the night will be delivered before Christmas. Doors open at 7.30 pm for 8 pm start. Contact 01793 770160 to book.



*LEN PAGE*

**Bradon Forest Theatre** The Peak, Purton, Wiltshire - 01793 773981

### **Pangottic presents Logic of Nothing**

**Friday 15 November, 7.30 pm** £6.50 (£5.50 Students)

Welcome to the world of Oscar Boffin; a slightly obsessive compulsive hoarder, inventor and a man who has filled his home with gadgets and contraptions to make his life easier (or harder, depending on how well they work).

Logic of Nothing is a Heath Robinson/Rube Goldberg inspired piece of non-verbal Circus-Theatre. An exploration into a relationship between man, circus and contraption using a blend of clown, juggling, magic and invention, all set to a unique live soundtrack of sounds and samples taken from the contraptions themselves.

*DOMINIC WALDRON*

### **Christmas Music Concerts:**

Thursday 12 December, 7 pm, Bradon Forest School. Tickets: £4 adults, £3 students

Wednesday 18 December, 7 pm, St Mary's Church, Purton

See [www.bradonforesttheatre.co.uk](http://www.bradonforesttheatre.co.uk) for more details.

### **Romeo and Juliet**

Wednesday 4 to Friday 6 December, 7.30 pm. Tickets: £5 adults, £4 students

Box office: 01793 773981 or email [calderd@bradonforest.wilts.sch.uk](mailto:calderd@bradonforest.wilts.sch.uk)

---

---

Bradon Forest students are already rehearsing hard for our Christmas performance of Romeo and Juliet. Although there will be a modern twist on the staging of the classic, students have been getting to grips with traditional Shakespearean English. There will be special performances for local partner primary schools and for our own English students, but the cast will also be performing for the public on the dates above.

## Wessex Male Choir



The choir will be holding their 2013 Christmas Concert at Holy Rood Catholic Church, Groundwell Road, Swindon, on Friday 13 December at 7.30 pm. Special guests this year are Swindon Pegasus Brass.

Tickets priced £12 (Children under 16: free) are available from the Choir on (01793) 813591, the Information Office, in Swindon Central Library, Regent Circus, Swindon (01793) 466454, from our website [www.wessexmalechoir.co.uk](http://www.wessexmalechoir.co.uk) or from [In Touch Services](#).

## News from The Cricklade Band

The band had a fantastic time in the sun this summer on our bandstand tour. We returned to a hot Bournemouth Pinewalk bandstand on one of the busiest Sundays this year at the resort. Warm sun also accompanied us to the Parade Gardens in Bath where the leader of the city's council, listening in the large audience congratulated us on our performance. The Crew lost quite some weight carrying all the gear up and down the long steep walkway to the bandstand. The park attendant couldn't believe how much equipment a modern band uses!

It was sunny again at John Coles Park in Chippenham, but the band had to play energetically to keep warm. Swindon Old Town Gardens saw another large crowd bask in balmy sun enjoying the tunes and joining the long queue at the ice cream kiosk. We were warmly welcomed back to Abbey Grounds bandstand at Cirencester after a two-year break.

We had our first visit to Cheltenham and the lovely surroundings of Pitteville Park and Pump Room. The bandstand here is just too small for us so we were invited to spread ourselves out behind the façade of imposing columns. Pictures of most of these events can be seen on the band's web site at [www.thecrickladeband.co.uk](http://www.thecrickladeband.co.uk) – if it's easier, please follow us on Facebook.

We also did our bit for Macmillan Cancer Support in September when we held a 'Big Tea Break' and raised £136. After several years' break we managed to fit in a concert at Purton Village Hall in support of Guide Dogs. Then there was the 'Harvest Home Concert' at Cricklade's United Church in October. We will of course be leading the Remembrance parade as usual on 10 November in Cricklade, also in Purton in the afternoon.

The Club at Cricklade is 'home' to the band, we're there on Monday and Thursday evenings; why not come along, have a chat and see where you could fit in and become involved, whether as someone who wants to learn to play; someone who's already playing but looking for a more modern outlook; someone who would like to join the lifters, shifters, tea-makers and fund-raisers of our

---

Crew. You'll be most welcome!

### **What's On**

To help pay our bills please support the Autumn Table-Top Sale on Saturday 16 November. It's going to be at The Club at Cricklade from 11 am to 1 pm.

If you're a Table-Top seller, please give Val a call on 01793 750516 to book your table at just £5. Setting up is from 10 am.

If you're a Table-Top browser, who knows what you might find? ... although the band itself will have our now-famous cake array, tea, coffee and a raffle.

## **Cotswold Water Park Trust**

### **Introduction to Geocaching, an event for all the family, Sunday 3 November, 10 am - 3 pm, Gateway Centre. Free**

Geocaching is an exciting outdoor activity for everyone, young and not so young – it's a great way of getting outside, exploring new places and taking on a challenge at the same time. The basic idea is that you use GPS or your mobile phone to hide and look for little containers which are known as Geocaches. If you have never really been sure how to get started but would love to have a go, then come and meet friendly expert Geocachers who will show you the basics, give you hints and tips – you can even take part on the day!

### **Dr Mark Avery – Fighting for Wildlife, 14 November, 7.30 pm**

Gateway Centre, Spine Rd South Cerney GL7 5TL

Well known campaigner, writer and Dr Mark Avery will be appearing in the Cotswold Water Park for the first time to give a frank and passionate talk about the current big conservation issues, and discussing the question 'Can the ordinary person make a difference?'

Booking essential. Tickets £7.50 and are available from the CWP Trust office by calling 01793 752413 or emailing [events@waterpark.org](mailto:events@waterpark.org).

### **Christmas Willow Wreaths, Stars and Angels, Monday 2 December 9.30 am - 12.30 pm or 1.30 pm - 4.30 pm**

Gateway Centre, Spine Road

A willow weaving workshop led by Norah Kennedy.

Come and learn the art of willow weaving and make your own simple but stunning Christmas decorations. Norah is an expert willow weaver and teacher – she will demonstrate techniques clearly which will have you getting creative with willow in no time. All equipment and willow supplied, no previous experience necessary.

We guarantee you will be delighted with what you take home!

Cost: £25 to include coffee/tea and a delicious Relish cake. Payment on booking please. Booking essential. To book call the CWPT office on 01793 752413 or email [events@waterpark.org](mailto:events@waterpark.org)

The Cotswold Water Park Trust is your local charity working to improve the Cotswold Water Park for wildlife and people. More info at [www.waterpark.org](http://www.waterpark.org).

*JILL BEWLEY, Communication and Events Manager,  
Cotswold Water Park Trust*

---

---

## Purton Cricket Club [purton.play-cricket.com](http://purton.play-cricket.com)

By the time you read this the club will have celebrated its very successful season at a presentation evening at The Red House on Saturday 19 October. The awards were made by Craig Miles, a Purton young man, who is now playing successfully for Gloucestershire County Cricket Club. Details of the awards to follow next month.



### From the Archives

1856 Swindon Advertiser – 26 May:

Purton Peace Demonstrations – we understand that from £80 - £90 has been collected in Purton for the purpose of giving the poor of that parish a dinner on the cricket field on Thursday 29th instant.

This was to celebrate the ending of the Crimean War.

JOE GARDNER

## Purton & District Darts League

This is the monthly update of the Purton & District Darts League. Well done to everyone for some tremendous darts being played – result sheets need to be with me by following Monday.



Don't forget to visit the web site at [www.d4rts.com/paddl/](http://www.d4rts.com/paddl/)

If you have anything that you would like me to add to the monthly blog, please contact me either on 0776 499 4933 or pop and see me at 36 Pavenhill, or failing that, drop a note through my door!

LISA MARTIN, Secretary



### Here comes winter!

Yes it is on its way but doesn't stop us in anyway in the Tennis Club.

**The Winter League** has started and we have submitted four teams for this season due to increased popularity to continue playing throughout the year.

Now we have the flood lights we will be playing throughout the week with a few to be played at weekends.

**Junior presentation evening and AGM - 6 November:** We have a slightly different approach this year as we would like to recognise the achievements of our younger members with a Junior presentation evening. This will be led by our head coach Phil Kerley and will be held at the Red House Club 6.30 pm on 6 November. Parents and juniors are very welcome.

This will be followed by the Annual General Meeting where all members are welcome to attend and review the great year that 2013 has been. We aim to start at 7.30 pm.

We will also be showing the new Purton Tennis club kit which would make a great Christmas present.

We look forward to seeing you.

**Coaching and membership:** Don't forget if you are interested in coaching please call Phil Kerley on 07711 852222.

---

Our membership secretary Mary Turner (07779 580 893) would be happy to talk through all membership options with you.

Please visit our web site *purtontennis.net* as it makes a good read and keeps you informed of the social events, fee rates, coaching availability and match calendars.

*STEPH BROWN, Secretary*

## Purton F.C.



The past month has seen the Hellenic league side progress in the Hellenic League Challenge Cup with a 2-0 away win over Headington Amateurs and league wins over Fairford Town 5-2, Shortwood United 4-0 and Letcombe 7-0 that sees the side joint top of their league. Other good news is that Nick McCrae, out for over a year with a bad injury, has made his comeback and Chris Rivers, Neil Fisher and Paul Carson have all joined the club, manager Chris Pethick and his squad.

Purton's Reserves, under managers Tony Webb and Ben Lewis, after a difficult start with a very young side, have drawn and won their last two league games and have progressed in the Corsham Print Senior Cup, knocking out last seasons winners Wilts Calne Town FC at the Red House 4-2 after extra time.

Purton's Youth sides have started their seasons with the Club, running an under 9s side, an under 10s, under 15s, under 16s and two under 17/18 sides and early results in their respective league and cup games have been encouraging.

Purton FC would like to thank all the 'locals' who have been turning out to support all our sides at Youth and Senior levels – long may it continue, it's really appreciated by all the club's management and players.

*ALAN EASTWOOD, Chairman/Hon Sec*

## Guide Dogs for the Blind



The Concert given for us by The Cricklade Band was well attended, the first part was by the members of their Academy whose performance was a credit to themselves and their Leader and Tutors. The remainder of the evening was by the full Band with a wide variety of music and styles; I was asked to introduce the items, and from my position at the front I was able to see the reactions of the audience, toes, fingers tapping etc. The Post Horn duet with Paul and Mike, plus the sound effects, well that really was something that had to be heard twice, and with some repartee from Paul throughout the evening, from the comments I heard from people as they were leaving, the whole concert was quality from start to finish.

Thanks to the amazing generosity of the Band, and all of you who came, we raised £405! Wow.

The next venue will be a stall at the Helping Hand Table Top Sale, which I will report on in next months Magazine.

Many thanks for everybody's continued support.

*BRIAN DAVIES, for the Purton Support Group*

---

## Purton Rainbows, Brownies & Guides



Making the most of the extended summery weather before autumn finally kicked in, the Guides spent an evening at Chilton Farm, our County campsite, for some campfire cooking. Chocolate bananas were slightly more successful than sponge cake cooked in oranges! They also enjoyed some singing round the campfire.

The Guide unit must be very righteous as they have had plenty of sun shining on them, not only at the campsite. Many of the unit took part in a dragon-boating event on another glorious day. They had a fantastic time and nobody fell in which is always a plus.

1<sup>st</sup> Purton Brownies weren't quite so fortunate with the weather when they went blackberry picking. Although dry as they left the hall, it was well and truly raining by the time they got to the field and they all returned very soggy. An evening to remember! Other outdoor activities have included 2<sup>nd</sup> Purton Brownies collecting natural items to make a collage and making leaf prints in clay. This is part of their themed activities on nature in Autumn. They have also looked at animal footprints, garden birds and made owl puppets.

Theme evenings are always well received. The Guides celebrated 'International Talk Like a Pirate Day' by making hats, eye patches and parrots for their shoulders! 1<sup>st</sup> Purton Brownies had an apple evening – which included apple tasting – Braeburns came out top but cooking apples weren't so popular! 1<sup>st</sup> Purton Brownies held a harvest-themed evening at Hooks Hill when they took along harvest gifts and entertained the residents with harvest quizzes and singing.

Rainbows are using letters of the alphabet to plan their meetings: A was making autumn leaves, B was planting daffodil bulbs, C was cooking apple turnovers to take home for tea and D was disguise when they made masks. Alongside these activities, the Rainbows have been gathering lots of items for the Christmas Shoebox appeal.

Finally a few individual mentions: congratulations to two 2<sup>nd</sup> Purton Brownies – Holly has gained her Writer badge and Katy-Erin has gained her World Traveller badge. Farewell to 'Dragonfly' (aka Jo Cook), Young Leader with 1<sup>st</sup> Purton Brownies who has gone to study at Leicester University – although we intend to keep her to her promise of coming back to us in her university holidays.

For enquiries about joining one of our units (girls or adult volunteers), contact Braydon District Commissioner Jo Begg by phone on 874066 or by email at [braydondc@wncounty.org.uk](mailto:braydondc@wncounty.org.uk). You can also register interest at [www.girlguiding.org.uk/interested](http://www.girlguiding.org.uk/interested)

## Wiltshire Good Neighbours



Just a reminder that I am here to help with information to (hopefully) solve problems and make your life a little easier. Please call me, Ellen Blacker on 07557 110414 or email me at [rwbrickladedgnc@communityfirst.org.uk](mailto:rwbrickladedgnc@communityfirst.org.uk)

## Wise Words

To be trusted is a greater compliment than to be loved.

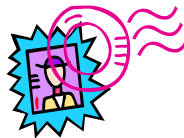
*George Macdonald*

---

---

## Swindon Scouts Christmas Post

As usual, 1<sup>st</sup> Purton and Lydiard Scout Group will be participating in Swindon Scout Christmas Post!



We will be selling stamps from 1 November at our usual locations: In Touch Services, Best One and Shear Success in Purton and at Toomers Garden Centre, in Lydiard Millicent.

All profits go to run Scouting in the Swindon, Purton, Highworth and Wootton Bassett areas.

Christmas cards must be properly addressed including postcode and only posted in the Special Scout Post Boxes. Stamps are 25p each, a real saving! Please **DO NOT USE** Scout post stamps on cards posted through Royal Mail post boxes. They are not valid and the receiver of the card will have to pay a £1 surcharge!

**Posting is between: 1 December and  
4 pm on Tuesday 10 December 2012**

The cards will be delivered between 14 and 16 December 2012

The delivery area for the Swindon Scout Christmas Post is Swindon Borough and some of the surrounding towns and villages as follows:

**Swindon Borough:** This includes all areas of Swindon, Badbury, Bishopstone, Blunsdon, Burderop, Chiseldon, Draycott Foliat, Elcombe, Hannington, Highworth, Hinton Parva, Hodson, Inglesham, Langton Park, Liddington, Overtown, Red Barn, South Leaze, South Marston, Stanton Fitzwarren, Stratton St Margaret, Thorney Park, Wanborough, West Leaze, Wroughton.

**Other Towns and Villages:** We deliver to Royal Wootton Bassett, Purton, Lydiard Millicent, Bushton, Clyffe Pypard, Tockenham, Broad Town, Cricklade, Latton, Ashton Keynes, Shrivenham, Watchfield, Bourton, Idstone, Ashbury and Kingston Winslow.

We DO NOT deliver to any other location.

Thank you everyone for supporting us; especially the local businesses for housing our boxes and selling stamps! A wonderful contribution.

### Have your Purton Magazine delivered FREE

Instead of remembering to buy your Magazine every month you can have it delivered free to your door.

For a £6 annual subscription we will deliver FREE within our area. Postal deliveries cost £15 per year. You can join our scheme at any time during the year with the price adjusted pro rata.

For further information contact [John Creasey](#).

## Purton Churches

Watch this space in the December magazine. The sheep are coming to the village. Meet them around the village in December and in St Mary's Church on 24 December at 4 pm.